

ENO2 Polyclonal Antibody

catalog number: D-AB-10203L

Note: Centrifuge before opening to ensure complete recovery of vial contents.

Description

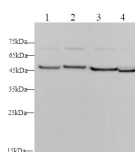
Reactivity	Human;Mouse;Rat
Immunogen	Recombinant Human ENO2 protein expressed by E.coli
Host	Rabbit
Isotype	IgG
Purification	Antigen Affinity Purification
Conjugation	Unconjugated
buffer	PBS with 0.05% proclin 300, 1% protective protein and 50% glycerol,pH7.4

Applications

Recommended Dilution

WB	1:500-1:1000
-----------	--------------

Data



Western blot with ENO2 Polyclonal antibody at dilution of 1:500.lane 1:SH-SY5Y whole cell lysate,lane 2:HeLa whole cell lysate,lane 3:Mouse brain,lane 4:Rat brain

Observed-MV:47 kDa

Calculated-MV:47 kDa

Preparation & Storage

Storage	Store at -20°C Valid for 12 months. Avoid freeze / thaw cycles.
Shipping	The product is shipped with ice pack,upon receipt,store it immediately at the temperature recommended.

Background

Enolase 2(2-phospho-D-glycerate hydrolyase; also Neuron-specific Enolase,NSE,neural enolase and gamma-enolase) is a 46 kDa member of the Enolase family of enzymes. It is expressed in developing neurons and glia,is known to catalyze the generation of phosphoenolpyruvate,and is suggested to possess neurotrophic activity for neurons,likely through an extracellular mechanism. Human Enolase 2 is 434 amino acids(aa) in length. The enzymatic site spans most of the length of the molecule. Enolase 2 exists as both a noncovalently-linked homodimer,or heterodimer with alpha-enolase. Full-length human Enolase 2 shares 99% aa identity with both mouse and canine Enolase 2. It shares 83% aa identity with human enolases 1 and 3.

For Research Use Only