

Recombinant SerpinG1/C1 inhibitor/C1IN Monoclonal Antibody

catalog number: **AN300101P**

Note: Centrifuge before opening to ensure complete recovery of vial contents.

Description

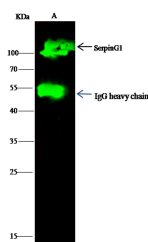
Reactivity	Human
Immunogen	Recombinant Human SerpinG1 protein
Host	Rabbit
Isotype	IgG
Clone	11G4
Purification	Protein A
Buffer	0.2 µm filtered solution in PBS

Applications

Recommended Dilution

WB	1:500-1:2000
IP	0.5-2 µL/mg of lysate

Data



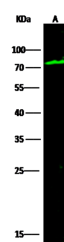
Immunoprecipitation analysis using 2 µL anti-SERPING1 Monoclonal Antibody and 15 µl of 50 % Protein G agarose.

Western blot was performed from the immunoprecipitate using SERPING1 Monoclonal Antibody at a dilution of

1:100. Lane A: 0.5 mg HepG2 Whole Cell Lysate

Observed-MW: 71 kDa

Calculated-MW: 55 kDa



Western Blot with SerpinG1 / C1 inhibitor / C1IN Monoclonal Antibody at dilution of 1:500. Lane A: HepG2 Whole Cell Lysate, Lysates/proteins at 30 µg per lane.

Observed-MW: 71 kDa

Calculated-MW: 55 kDa

Preparation & Storage

Storage	This antibody can be stored at 2°C-8°C for one month without detectable loss of activity. Antibody products are stable for twelve months from date of receipt when stored at -20°C to -80°C. Preservative-Free. Avoid repeated freeze-thaw cycles.
Shipping	Ice bag

Background

This gene encodes a highly glycosylated plasma protein involved in the regulation of the complement cascade. Its protein inhibits activated C1r and C2s of the first complement component and thus regulates complement activation. Deficiency of this protein is associated with hereditary angioneurotic oedema (HANE). Alternative splicing results in multiple transcript variants encoding the same isoform.

For Research Use Only