

## PCYT2 Polyclonal Antibody

catalog number: **E-AB-19016**

**Note:** Centrifuge before opening to ensure complete recovery of vial contents.

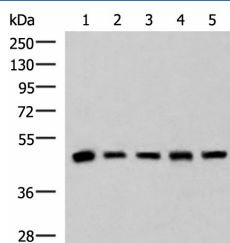
### Description

|                     |                                                                                    |
|---------------------|------------------------------------------------------------------------------------|
| <b>Reactivity</b>   | Human;Mouse;Rat                                                                    |
| <b>Immunogen</b>    | Fusion protein of human PCYT2                                                      |
| <b>Host</b>         | Rabbit                                                                             |
| <b>Isotype</b>      | IgG                                                                                |
| <b>Purification</b> | Antigen affinity purification                                                      |
| <b>Buffer</b>       | Phosphate buffered solution, pH 7.4, containing 0.05% stabilizer and 50% glycerol. |

### Applications

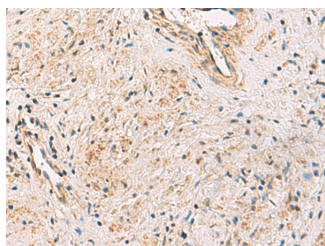
| Applications | Recommended Dilution |
|--------------|----------------------|
| <b>WB</b>    | 1:1000-1:5000        |
| <b>IHC</b>   | 1:40-1:200           |

### Data

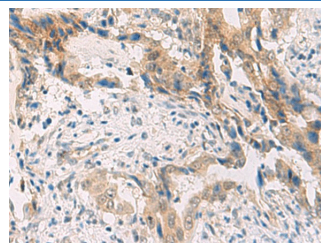


Western blot analysis of Human fetal liver tissue HepG2 A172 Hela and Jurkat cell lysates using PCYT2 Polyclonal Antibody at dilution of 1:800

**Observed-MW:Refer to figures**  
**Calculated-MW:44 kDa**



Immunohistochemistry of paraffin-embedded Human prostate cancer tissue using PCYT2 Polyclonal Antibody at dilution of 1:55(×200)



Immunohistochemistry of paraffin-embedded Human cervical cancer tissue using PCYT2 Polyclonal Antibody at dilution of 1:55(×200)

### Preparation & Storage

|                 |                                                                                                        |
|-----------------|--------------------------------------------------------------------------------------------------------|
| <b>Storage</b>  | Store at -20°C Valid for 12 months. Avoid freeze / thaw cycles.                                        |
| <b>Shipping</b> | The product is shipped with ice pack,upon receipt,store it immediately at the temperature recommended. |

### Background

This gene encodes an enzyme that catalyzes the formation of CDP-ethanolamine from CTP and phosphoethanolamine in the Kennedy pathway of phospholipid synthesis. Alternative splicing results in multiple transcript variants.

### For Research Use Only