

GALP Polyclonal Antibody

catalog number: E-AB-17983

Note: Centrifuge before opening to ensure complete recovery of vial contents.

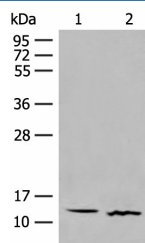
Description

| | |
|---------------------|--|
| Reactivity | Human;Mouse |
| Immunogen | Synthetic peptide of human GALP |
| Host | Rabbit |
| Isotype | IgG |
| Purification | Antigen affinity purification |
| Buffer | Phosphate buffered solution, pH 7.4, containing 0.05% stabilizer and 50% glycerol. |

Applications

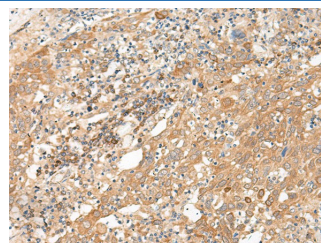
| Applications | Recommended Dilution |
|--------------|----------------------|
| WB | 1:500-1:2000 |
| IHC | 1:50-1:300 |

Data



Western blot analysis of Human fetal brain tissue and Mouse thymus tissue lysates using GALP Polyclonal Antibody at dilution of 1:500

Observed-MW:Refer to figures
Calculated-MW:13 kDa



Immunohistochemistry of paraffin-embedded Human cervical cancer tissue using GALP Polyclonal Antibody at dilution of 1:45(×200)

Preparation & Storage

| | |
|-----------------|--|
| Storage | Store at -20°C Valid for 12 months. Avoid freeze / thaw cycles. |
| Shipping | The product is shipped with ice pack,upon receipt,store it immediately at the temperature recommended. |

Background

This gene encodes a member of the galanin family of neuropeptides. The encoded protein binds galanin receptors 1, 2 and 3 with the highest affinity for galanin receptor 3 and has been implicated in biological processes involving the central nervous system including hypothalamic regulation of metabolism and reproduction. A peptide encoded by a splice variant of this gene, termed alarin, has vasoactive properties, displays antimicrobial activity against E. coli, and may serve as a marker for neuroblastic tumors.

For Research Use Only