

Recombinant Human Neurexophilin-1/NXPH1 Protein (His Tag)



Catalog Number:PKSH032794

Note: Centrifuge before opening to ensure complete recovery of vial contents.

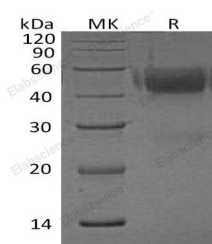
Description

| | |
|------------------------------------|----------------------------|
| Synonyms | Neurexophilin-1;NXPH1;NPH1 |
| Species | Human |
| Expression Host | HEK293 Cells |
| Sequence | Ala22-Gly271 |
| Accession | P58417 |
| Calculated Molecular Weight | 29.7 kDa |
| Observed molecular weight | 40-60 kDa |
| Tag | C-His |

Properties

| | |
|-----------------------|--|
| Purity | > 90 % as determined by reducing SDS-PAGE. |
| Endotoxin | < 1.0 EU per µg of the protein as determined by the LAL method. |
| Storage | Generally, lyophilized proteins are stable for up to 12 months when stored at -20 to -80°C. Reconstituted protein solution can be stored at 4-8°C for 2-7 days. Aliquots of reconstituted samples are stable at < -20°C for 3 months. |
| Shipping | This product is provided as lyophilized powder which is shipped with ice packs. |
| Formulation | Lyophilized from a 0.2 µm filtered solution of 20mM PB, 150mM NaCl, pH 7.2. Normally 5 % - 8 % trehalose, mannitol and 0.01% Tween80 are added as protectants before lyophilization. Please refer to the specific buffer information in the printed man |
| Reconstitution | Please refer to the printed manual for detailed information. |

Data



> 90 % as determined by reducing SDS-PAGE.

Background

Neurexophilin-1 (NXPH1) is a member of Neurexophilin family. NXPH1 consist of 271 amino acids. It contains a 21 amino acid signal peptide, 86 amino acid propeptide, and 164 amino acid mature protein. NXPH1 is expressed in subpopulations of neurons within the cerebral cortex, cerebellum and olfactory bulb that are thought to be inhibitory interneurons. In humans, NXPH2 and NXPH3 are most similar to NXPH1, sharing 84% and 64% aa identity within the mature region, respectively. By contrast, NXPH4 does not bind α -neurexins. Genetic deletion of NXPH1 or NXPH3 produces no anatomical effect.

For Research Use Only

A Reliable Research Partner in Life Science and Medicine

Toll-free: 1-888-852-8623

Web: www.elabscience.com

Tel: 1-832-243-6086

Email: techsupport@elabscience.com

Fax: 1-832-243-6017