

Elab Fluor® 488 Anti-Human CD107a/LAMP-1 Antibody[H4A3]

Catalog Number: E-AB-F1149L

Note: Centrifuge before opening to ensure complete recovery of vial contents.

Description

Reactivity	Human
Host	Mouse
Isotype	Mouse IgG1, κ
Clone No.	H4A3
Isotype Control	Elab Fluor® 488 Mouse IgG1, κ Isotype Control[MOPC-21] [Product E-AB-F09792L]
Conjugation	Elab Fluor® 488
Conjugation Information	Elab Fluor® 488 is designed to be excited by the Blue laser (488 nm) and detected using an optical filter centered near 520 nm (e.g., a 525/40 nm bandpass filter).
Storage Buffer	Phosphate buffered solution, pH 7.2, containing 0.09% sodium azide and 1% BSA.

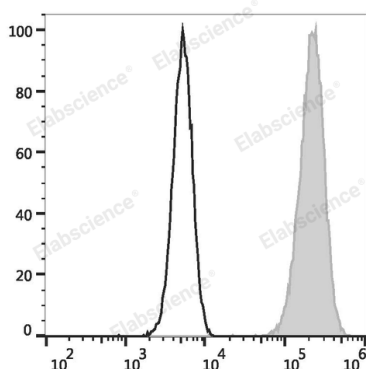
Applications

Recommended usage

FCM

Each lot of this antibody is quality control tested by flow cytometric analysis. **The amount of the reagent is suggested to be used 5 μL of antibody per test (million cells in 100 μL staining volume or per 100 μL of whole blood).** Please check your vial before the experiment. Since applications vary, the appropriate dilutions must be determined for individual use.

Data



Intracellular staining of Jurkat cells with Elab Fluor® 488 Anti-Human CD107a/LAMP-1 Antibody (filled gray

histogram) or Elab Fluor® 488 Mouse IgG1, κ Isotype Control (empty black histogram).

Preparation & Storage

Storage	Keep as concentrated solution. This product can be stored at 2-8°C for 12 months. Please protected from prolonged exposure to light and do not freeze.
Shipping	Ice bag

Antigen Information

Alternate Names	LAMP-1LGP-120;Lysosome-Associated Membrane Protein 1;LAMP-1
Uniprot ID	P11279
Gene ID	3916

For Research Use Only

Background

CD107a, also known as Lysosome-Associated Membrane Protein 1 (LAMP-1) or LGP-120, is a 110-140 kD type I membrane glycoprotein. Mature CD107a is heavily glycosylated from a 40 kD core protein. This molecule is located on the luminal side of lysosomes. Upon activation, CD107a is transferred to the cell membrane surface of activated platelets, activated lymphocytes, macrophages, epithelial cells, endothelial cells, and some tumor cells. CD107a has been suggested to play a role in the protection of lysosomal membrane from lysosomal hydrolases which is involved in cell adhesion and regulation of tumor metastasis, and mediates autoimmune disease progression. CD107a is a ligand for galactin and E-selectin. Surface expression of LAMP-1 has been shown to correlate with CD8+ T cell and NK cell cytotoxicity.