

Desmin Monoclonal Antibody

Catalog Number:E-AB-70228



Note: Centrifuge before opening to ensure complete recovery of vial contents.

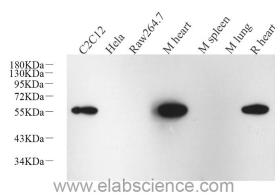
Description

Reactivity	Human,Mouse,Rat
Immunogen	Recombinant protein corresponding to Mouse desmin
Host	Mouse
Isotype	IgG
Clone	3E1G4
Purification	Affinity purification
Conjugation	Unconjugated
Formulation	PBS with 0.02% sodium azide, 1% protective protein and 50% glycerol, pH7.4

Applications Recommended Dilution

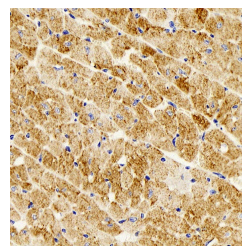
WB	1:1000-1:2000
IHC	1:300-1:800

Data

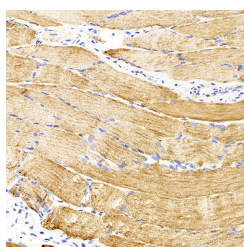


Western Blot analysis of various samples using Desmin Monoclonal Antibody at dilution of 1:1000.

Observed Mw:55kDa
Calculated Mw:54kDa



Immunohistochemistry analysis of paraffin-embedded mouse heart using Desmin Monoclonal Antibody at dilution of 1:300.



Immunohistochemistry analysis of paraffin-embedded rat skeletal muscle using Desmin Monoclonal Antibody at dilution of 1:300.

Preparation & Storage

Storage Store at -20°C. Avoid freeze / thaw cycles.

Background

This gene encodes a muscle-specific class III intermediate filament. Homopolymers of this protein form a stable

For Research Use Only

A Reliable Research Partner in Life Science and Medicine

Toll-free: 1-888-852-8623

Web: www.elabscience.com

Tel: 1-832-243-6086

Email: techsupport@elabscience.com

Fax: 1-832-243-6017

Desmin Monoclonal Antibody

Catalog Number: E-AB-70228



intracytoplasmic filamentous network connecting myofibrils to each other and to the plasma membrane. Mutations in this gene are associated with desmin-related myopathy, a familial cardiac and skeletal myopathy (CSM), and with distal myopathies.

For Research Use Only

A Reliable Research Partner in Life Science and Medicine

Toll-free: 1-888-852-8623

Web: www.elabscience.com

Tel: 1-832-243-6086

Email: techsupport@elabscience.com

Fax: 1-832-243-6017