

Recombinant Human MAP1D Protein (His Tag)

Catalog Number:PKSH032749



Note: Centrifuge before opening to ensure complete recovery of vial contents.

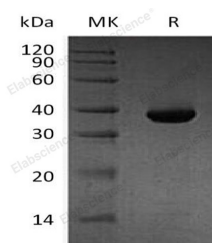
Description

Synonyms	Methionine Aminopeptidase 1D Mitochondrial;Methionyl Aminopeptidase Type 1D Mitochondrial;METAP1D;MAP1D;MAP 1D;MetAP 1D;Metap11
Species	Human
Expression Host	E.coli
Sequence	Arg44-Ala335
Accession	Q6UB28
Calculated Molecular Weight	35.4 kDa
Observed molecular weight	35-40 kDa
Tag	N-His & C-His

Properties

Purity	> 95 % as determined by reducing SDS-PAGE.
Endotoxin	< 1.0 EU per µg of the protein as determined by the LAL method.
Storage	Store at < -20°C, stable for 6 months. Please minimize freeze-thaw cycles.
Shipping	This product is provided as liquid. It is shipped at frozen temperature with blue ice/gel packs. Upon receipt, store it immediately at < - 20°C.
Formulation	Supplied as a 0.2 µm filtered solution of 20mM Tris-HCl, pH 8.0.
Reconstitution	Not Applicable

Data



> 95 % as determined by reducing SDS-PAGE.

Background

Methionine Aminopeptidase 1D (METAP1D) is a mitochondrion protein that belongs to the peptidase M24A family. METAP1D is overexpressed at the protein level in colon cancer cell lines and colon tumors as compared to normal tissues. N-terminal methionine removal is an important cellular process required for proper biological activity, subcellular localization, and eventual degradation of many proteins. METAP1D is also active with zinc, manganese or divalent ions. It may also play an important role in colon tumorigenesis.

For Research Use Only

A Reliable Research Partner in Life Science and Medicine

Toll-free: 1-888-852-8623

Web: www.elabscience.com

Tel: 1-832-243-6086

Email: techsupport@elabscience.com

Fax: 1-832-243-6017