

Recombinant Phospho-c-Jun (Ser63) Monoclonal Antibody

catalog number: **AN300644L**

Note: Centrifuge before opening to ensure complete recovery of vial contents.

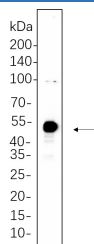
Description

Reactivity	Human;Mouse;Rat
Immunogen	A synthetic peptide corresponding to residues around (Ser63) of Human Phospho-c-Jun
Host	Rabbit
Isotype	IgG, κ
Clone	B579
Purification	Protein A
Buffer	PBS, 50% glycerol, 0.05% Proclin 300, 0.05% protein protectant.

Applications

Applications	Recommended Dilution
IHC	1:100-1:500
WB	1:2000-1:10000
IF	1:200-1:1000
ELISA	1:5000-1:20000

Data



Western Blot with Recombinant Phospho-c-Jun (Ser63)
Monoclonal Antibody at dilution of 1:1000 dilution. Lane A:
C6 whole cell lysate.

Observed-MW:48 kDa

Calculated-MW:36 kDa

Preparation & Storage

Storage	Store at -20°C Valid for 12 months. Avoid freeze / thaw cycles.
Shipping	Ice bag

Background

This gene is the putative transforming gene of avian sarcoma virus 17. It encodes a protein which is highly similar to the viral protein, and which interacts directly with specific target DNA sequences to regulate gene expression. This gene is intronless and is mapped to 1p32-p31, a chromosomal region involved in both translocations and deletions in human malignancies.

For Research Use Only