

Recombinant Human CDK4 Protein (His Tag)

Catalog Number: PDEH100709

Note: Centrifuge before opening to ensure complete recovery of vial contents.

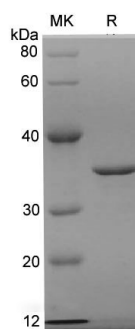
Description

Species	Human
Source	E.coli-derived Human CDK4 protein Ala2-Glu303, with an N-terminal His
Calculated MW	33.5 kDa
Observed MW	35.8 kDa
Accession	P11802-1
Bio-activity	Not validated for activity

Properties

Purity	> 95% as determined by reducing SDS-PAGE.
Endotoxin	< 10 EU/mg of the protein as determined by the LAL method
Storage	Generally, lyophilized proteins are stable for up to 12 months when stored at -20 to -80 °C. Reconstituted protein solution can be stored at 4-8°C for 2-7 days. Aliquots of reconstituted samples are stable at < -20°C for 3 months.
Shipping	This product is provided as lyophilized powder which is shipped with ice packs.
Formulation	Lyophilized from a 0.2 µm filtered solution in PBS with 5% Trehalose and 5% Mannitol.
Reconstitution	It is recommended that sterile water be added to the vial to prepare a stock solution of 0.5 mg/mL. Concentration is measured by UV-Vis.

Data



> 95 % as determined by reducing SDS-PAGE.

Background

The protein encoded by this gene is a member of the Ser/Thr protein kinase family. This protein is highly similar to the gene products of *S. cerevisiae* cdc28 and *S. pombe* cdc2. It is a catalytic subunit of the protein kinase complex that is important for cell cycle G1 phase progression. The activity of this kinase is restricted to the G1-S phase, which is controlled by the regulatory subunits D-type cyclins and CDK inhibitor p16(INK4a). This kinase was shown to be responsible for the phosphorylation of retinoblastoma gene product (Rb). Mutations in this gene as well as in its related proteins including D-type cyclins, p16(INK4a) and Rb were all found to be associated with tumorigenesis of a variety of cancers. Multiple polyadenylation sites of this gene have been reported.

For Research Use Only