

## beta actin Monoclonal Antibody

catalog number: **E-AB-48018**

**Note:** Centrifuge before opening to ensure complete recovery of vial contents.

### Description

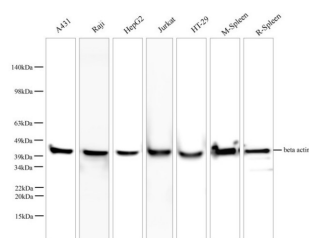
<b>Reactivity</b>	Human;Mouse;Rat;Zebrafish
<b>Immunogen</b>	Recombinant human Beta actin protein
<b>Host</b>	Mouse
<b>Isotype</b>	IgG2a
<b>Clone</b>	2B2
<b>Purification</b>	Protein A/G Purification
<b>Buffer</b>	PBS with 0.05% Proclin300, 1% protective protein and 50% glycerol, pH7.4

### Applications

### Recommended Dilution

<b>WB</b>	1:1000-1:2000
<b>IF</b>	1:100-1:200

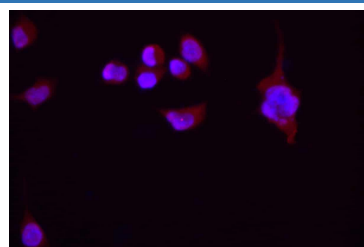
### Data



Western blot with Anti beta actin Monoclonal Antibody at dilution of 1:1000. Lane 1:A431 cell lysate, Lane 2:Raji cell lysate, Lane 3:HepG2 cell lysate, Lane 4:Jurkat cell lysate, Lane 5:HT-29 cell lysate, Lane 6:Mouse Spleen tissue lysate, Lane 7:Rat Spleen tissue lysate.

**Observed-MW:43 kDa**

**Calculated-MW:43 kDa**



Immunofluorescence analysis of 293 cells with anti-beta actin monoclonal antibody at 1:100 dilution.

### Preparation & Storage

<b>Storage</b>	Store at -20°C Valid for 12 months. Avoid freeze / thaw cycles.
<b>Shipping</b>	The product is shipped with ice pack, upon receipt, store it immediately at the temperature recommended.

### Background

Beta-actin (ACTB/ACTB) is one of six different actin isoforms in humans. Actins are highly conserved proteins that are involved in cell motility, structure and integrity. Beta actin is a major constituent of the contractile apparatus and one of the two nonmuscle cytoskeletal actins. Beta-actin gene is stably and constitutively expressed at high levels in most tissues and cells, and commonly used as a loading control for western blot and as a control for qPCR.

### For Research Use Only