

## RAB5B Polyclonal Antibody

**catalog number: E-AB-67871**

**Note:** Centrifuge before opening to ensure complete recovery of vial contents.

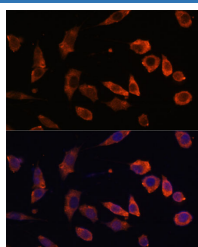
### Description

|                     |  |
|---------------------|--|
| <b>Reactivity</b>   | Human;Mouse;Rat  |
| <b>Immunogen</b>    | Recombinant fusion protein of human RAB5B (NP_002859.1).                           |
| <b>Host</b>         | Rabbit   |
| <b>Isotype</b>      | IgG  |
| <b>Purification</b> | Affinity purification  |
| <b>Buffer</b>       | Phosphate buffered solution, pH 7.4, containing 0.05% stabilizer and 50% glycerol. |

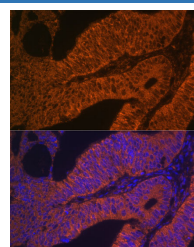
### Applications

| Applications | Recommended Dilution |
|--------------|----------------------|
| IF           | 1:50-1:200           |

### Data



Immunofluorescence analysis of L929 cells using RAB5B Polyclonal Antibody at dilution of 1:100. Blue: DAPI for nuclear staining.



Immunofluorescence analysis of Human colon carcinoma using RAB5B Polyclonal Antibody at dilution of 1:100. Blue: DAPI for nuclear staining.

### Preparation & Storage

|                 |  |
|-----------------|--|
| <b>Storage</b>  | Store at -20°C Valid for 12 months. Avoid freeze / thaw cycles.  |
| <b>Shipping</b> | The product is shipped with ice pack, upon receipt, store it immediately at the temperature recommended. |

### Background

RAB5B (RAB5B, Member RAS Oncogene Family) is a Protein Coding gene. Diseases associated with RAB5B include Parkinson Disease, Late-Onset. Among its related pathways are RAB GEFs exchange GTP for GDP on RABs and TBC/ RABGAPs. Gene Ontology (GO) annotations related to this gene include GTP binding and GDP binding. An important paralog of this gene is RAB5C.

### For Research Use Only