

## CCR7 Polyclonal Antibody

catalog number: **E-AB-70359**

**Note:** Centrifuge before opening to ensure complete recovery of vial contents.

### Description

<b>Reactivity</b>	Human;Mouse;Rat
<b>Immunogen</b>	KLH conjugated Synthetic peptide corresponding to Mouse CCR7
<b>Host</b>	Rabbit
<b>Isotype</b>	IgG
<b>Purification</b>	Affinity purification
<b>Buffer</b>	Phosphate buffered solution, pH 7.4, containing 0.05% stabilizer, 1% protein protectant and 50% glycerol.

### Applications

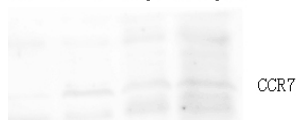
**WB**

### Recommended Dilution

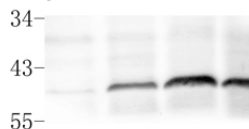
1:500-1:2000

### Data

rkcat THP-1 M-thymus R-thymus



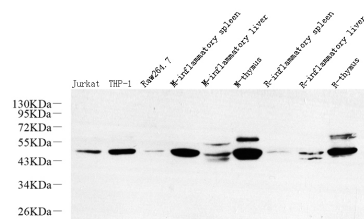
Jurkat THP-1 M-thymus R-th



Western Blot analysis of various samples using control peptide antigen (left) and CCR7 Polyclonal Antibody at dilution of 1:800(right).

**Observed-MW:48 kDa**

**Calculated-MW:43 kDa**



Western Blot analysis of various samples using CCR7 Polyclonal Antibody at dilution of 1:800.

**Observed-MW:48 kDa**

**Calculated-MW:43 kDa**

### Preparation & Storage

#### Storage

Store at -20°C Valid for 12 months. Avoid freeze / thaw cycles.

#### Shipping

The product is shipped with ice pack,upon receipt,store it immediately at the temperature recommended.

### Background

The protein encoded by this gene is a member of the Gprotein-coupled receptor family. This receptor was identified as a gene induced by the Epstein-Barr virus (EBV), and is thought to be a mediator of EBV effects on B lymphocytes. This receptor is expressed in various lymphoid tissues and activates B and T lymphocytes. It has been shown to control the migration of memory T cells to inflamed tissues, as well as stimulate dendritic cell maturation. The chemokine (C-C motif) ligand 19 (CCL19/ECL) has been reported to be a specific ligand of this receptor.

### For Research Use Only

Toll-free: 1-888-852-8623  
Web: [www.elabscience.com](http://www.elabscience.com)

Tel: 1-832-243-6086  
Email: [techsupport@elabscience.com](mailto:techsupport@elabscience.com)

Fax: 1-832-243-6017

Rev. V1.7