

Recombinant Human SOCS2 protein (His tag)

Catalog Number:PDEH100325



Note: Centrifuge before opening to ensure complete recovery of vial contents.

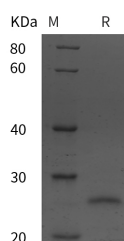
Description

Synonyms	Suppressor of cytokine signaling 2;SOCS2;Cytokine-inducible SH2 protein 2;STAT-induced STAT inhibitor 2
Species	Human
Expression Host	E.coli
Sequence	Met 1-Val 198
Accession	O14508
Calculated Molecular Weight	21.7 kDa
Observed molecular weight	25 kDa
Tag	N-His & C-His

Properties

Purity	> 95 % as determined by reducing SDS-PAGE.
Endotoxin	Please contact us for more information.
Storage	Generally, lyophilized proteins are stable for up to 12 months when stored at -20 to -80°C. Reconstituted protein solution can be stored at 4-8°C for 2-7 days. Aliquots of reconstituted samples are stable at < -20°C for 3 months.
Shipping	This product is provided as lyophilized powder which is shipped with ice packs.
Formulation	Lyophilized from sterile PBS, pH 7.4. Normally 5 % - 8 % trehalose, mannitol and 0.01 % Tween80 are added as protectants before lyophilization. Please refer to the specific buffer information in the printed manual.
Reconstitution	Please refer to the printed manual for detailed information.

Data



> 95 % as determined by reducing SDS-PAGE.

Background

SOCS-2 (Suppressor of cytokine signaling 2; also CIS-2 and SSI-2) is a 25 kDa member of the SOCS family of proteins. It is an SH2-domain containing cytoplasmic adaptor protein expressed by multiple cell types. It blocks receptor signaling by binding to phosphorylated tyrosines in the cytoplasmic domain of select receptors, including the receptors for leptin, IGF-I and GH. Human SOCS-2 is 198 amino acids (aa) in length and contains one SH2 domain (aa 48?156) and a SOCS box (aa 160?198) that mediates interaction with elongin B or C of the E3 ubiquitin ligase complex. There is one splice variant that shows an Arg-rich eight aa substitution for aa 31?39. Full-length SOCS-2 is 94% and 96% aa identical to mouse and porcine SOCS-2, respectively.

For Research Use Only

A Reliable Research Partner in Life Science and Medicine

Toll-free: 1-888-852-8623

Web: www.elabscience.com

Tel: 1-832-243-6086

Email: techsupport@elabscience.com

Fax: 1-832-243-6017