

Recombinant Human TEM7/PLXDC1 Protein (His Tag)



Catalog Number:PKSH032908

Note: Centrifuge before opening to ensure complete recovery of vial contents.

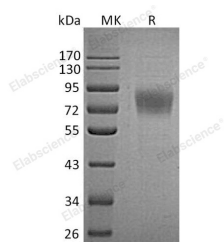
Description

Synonyms	Plexin Domain-Containing Protein 1;Tumor Endothelial Marker 3;Tumor Endothelial Marker 7;PLXDC1;TEM3;TEM7
Species	Human
Expression Host	HEK293 Cells
Sequence	Leu19-Thr426
Accession	AAH36059.1
Calculated Molecular Weight	46.5 kDa
Observed molecular weight	60-90 kDa
Tag	C-His

Properties

Purity	> 95 % as determined by reducing SDS-PAGE.
Endotoxin	< 1.0 EU per µg of the protein as determined by the LAL method.
Storage	Generally, lyophilized proteins are stable for up to 12 months when stored at -20 to -80°C. Reconstituted protein solution can be stored at 4-8°C for 2-7 days. Aliquots of reconstituted samples are stable at < -20°C for 3 months.
Shipping	This product is provided as lyophilized powder which is shipped with ice packs.
Formulation	Lyophilized from a 0.2 µm filtered solution of PBS, 5% Threhalose, pH 7.4. Normally 5 % - 8 % trehalose, mannitol and 0.01% Tween80 are added as protectants before lyophilization. Please refer to the specific buffer information in the printed manu
Reconstitution	Please refer to the printed manual for detailed information.

Data



> 95 % as determined by reducing SDS-PAGE.

Background

Plexin Domain-Containing Protein 1 (PLXDC1) is a single-pass type I membrane protein that belongs to the plexin family. Secreted PLXDC1 is localized predominantly at the tight junctions of vascular endothelial cells and to a lesser extent at the luminal surface of vascular endothelial cells. PLXDC1 is expressed in fibrovascular membrane with increased expression in individuals with proliferative diabetic retinopathy. It can detect in endothelial cells from colorectal cancer, and in endothelial cells from primary cancers of the lung, liver, pancreas, breast and brain. PLXDC1 interacts with NID1 and may also interact with CTTN. It plays a important role in endothelial cell capillary morphogenesis, the proliferation and maintenance of neovascular endothelial cells in the formation of fibrovascular membranes (FVMs).

For Research Use Only

A Reliable Research Partner in Life Science and Medicine

Toll-free: 1-888-852-8623

Web: www.elabscience.com

Tel: 1-832-243-6086

Email: techsupport@elabscience.com

Fax: 1-832-243-6017