

Recombinant Human Interleukin-22/IL-22 Protein

Catalog Number:PKSH033621



Note: Centrifuge before opening to ensure complete recovery of vial contents.

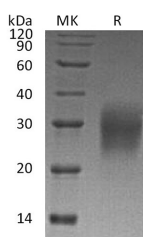
Description

Synonyms	Interleukin-22;IL-22;Cytokine Zcyto18;IL-10-related T-cell-derived-inducible factor;IL-TIF
Species	Human
Expression Host	HEK293 Cells
Sequence	Ala34-Ile179
Accession	Q9GZX6
Calculated Molecular Weight	17.9 kDa
Observed molecular weight	25-35 kDa
Tag	None

Properties

Purity	> 95 % as determined by reducing SDS-PAGE.
Endotoxin	< 1.0 EU per µg of the protein as determined by the LAL method.
Storage	Generally, lyophilized proteins are stable for up to 12 months when stored at -20 to -80°C. Reconstituted protein solution can be stored at 4-8°C for 2-7 days. Aliquots of reconstituted samples are stable at < -20°C for 3 months.
Shipping	This product is provided as lyophilized powder which is shipped with ice packs.
Formulation	Lyophilized from a 0.2 µm filtered solution of PBS, pH 7.4. Normally 5 % - 8 % trehalose, mannitol and 0.01 % Tween80 are added as protectants before lyophilization. Please refer to the specific buffer information in the printed manual.
Reconstitution	Please refer to the printed manual for detailed information.

Data



> 95 % as determined by reducing SDS-PAGE.

Background

Interleukin-22(IL-22) is a member of a group of the IL-10 family; a class of potent mediators of cellular inflammatory responses. IL-22 is produced by activated DC and T cells. IL-22 and IL-10 receptor chains play a role in cellular targeting and signal transduction. It can initiate and regulate innate immune responses against bacterial pathogens especially in epithelial cells such as respiratory and gut epithelial cells. IL-22 along with IL-17 likely plays a role in the coordinated response of both adaptive and innate immune systems. IL-22 also promotes hepatocyte survival in the liver and epithelial cells in the lung and gut similar to IL-10. Biological activity of IL-22 is initiated by binding to a cell-surface complex consisting of IL-22R1 and IL-10R2 receptor chains. IL-22 biological activity is further regulated by interactions with a

For Research Use Only

A Reliable Research Partner in Life Science and Medicine

Toll-free: 1-888-852-8623

Web: www.elabscience.com

Tel: 1-832-243-6086

Email: techsupport@elabscience.com

Fax: 1-832-243-6017

Recombinant Human Interleukin-22/IL-22 Protein

Catalog Number:PKSH033621



soluble binding protein; IL-22BP. IL-22BP and an extracellular region of IL-22R1 share sequence similarity. In some cases; the pro-inflammatory versus tissue-protective functions of IL-22 are regulated by cytokine IL-17A.

For Research Use Only

A Reliable Research Partner in Life Science and Medicine

Toll-free: 1-888-852-8623

Tel: 1-832-243-6086

Fax: 1-832-243-6017

Web: www.elabscience.com

Email: techsupport@elabscience.com