

CDK1 Polyclonal Antibody

catalog number: E-AB-70286

Note: Centrifuge before opening to ensure complete recovery of vial contents.

Description

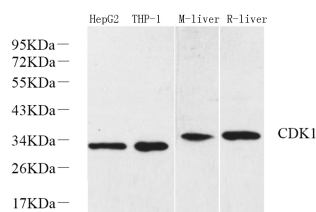
| | |
|---------------------|---|
| Reactivity | Human;Mouse;Rat |
| Immunogen | KLH conjugated Synthetic peptide corresponding to mouse CDK1 |
| Host | Rabbit |
| Isotype | IgG |
| Purification | Affinity purification |
| Conjugation | Unconjugated |
| Buffer | Phosphate buffered solution, pH 7.4, containing 0.05% stabilizer, 1% protein protectant and 50% glycerol. |

Applications

Recommended Dilution

| | |
|-----------|--------------|
| WB | 1:500-1:2000 |
|-----------|--------------|

Data



Western Blot analysis of various samples using CDK1
Polyclonal Antibody at dilution of 1:1000.

Observed-MW:34 kDa

Calculated-MW:34 kDa

Preparation & Storage

| | |
|-----------------|--|
| Storage | Store at -20°C Valid for 12 months. Avoid freeze / thaw cycles. |
| Shipping | The product is shipped with ice pack, upon receipt, store it immediately at the temperature recommended. |

Background

CDK1, also named as CDC2, belongs to the protein kinase superfamily, CMGC Ser/Thr protein kinase family and CDC2/CDKX subfamily. CDC2 plays a key role in the control of the eukaryotic cell cycle. It is required in higher cells for entry into S-phase and mitosis. CDC2 is a catalytic subunit of the highly conserved protein kinase complex known as M-phase promoting factor (MPF), which is essential for G1/S and G2/M phase transitions of eukaryotic cell cycle. It is a component of the kinase complex that phosphorylates the repetitive C-terminus of RNA polymerase II. Mitotic cyclins stably associate with CDC2 and function as regulatory subunits. The antibody is specific to the 2 isoforms of CDC2.

For Research Use Only