

CK-8 Polyclonal Antibody

catalog number: E-AB-70236

Note: Centrifuge before opening to ensure complete recovery of vial contents.

Description

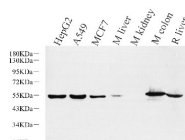
Reactivity	Human;Mouse;Rat
Immunogen	KLH conjugated Synthetic peptide corresponding to Mouse Cytokeratin 8
Host	Rabbit
Isotype	IgG
Purification	Affinity purification
Buffer	Phosphate buffered solution, pH 7.4, containing 0.05% stabilizer, 1% protein protectant and 50% glycerol.

Applications

Recommended Dilution

WB	1:500-1:2000
IHC	1:200-1:800

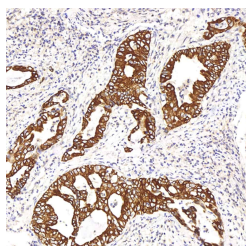
Data



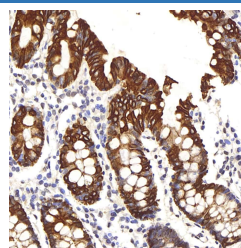
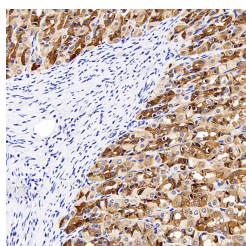
Western Blot analysis of various samples using CK-8 Polyclonal Antibody at dilution of 1:1000.

Observed-MW:54 kDa

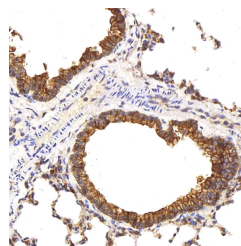
Calculated-MW:54 kDa



Immunohistochemistry analysis of paraffin-embedded human stomach cancer using CK-8 Polyclonal Antibody at dilution of 1:200.



Immunohistochemistry analysis of paraffin-embedded human colon using CK-8 Polyclonal Antibody at dilution of 1:200.



Immunohistochemistry analysis of paraffin-embedded mouse lung using CK-8 Polyclonal Antibody at dilution of 1:200.

For Research Use Only

Toll-free: 1-888-852-8623
Web: www.elabscience.com

Tel: 1-832-243-6086
Email: techsupport@elabscience.com

Fax: 1-832-243-6017

Rev. V1.7

Immunohistochemistry analysis of paraffin-embedded rat stomach using CK-8 Polyclonal Antibody at dilution of 1:300.

Preparation & Storage

Storage

Store at -20°C Valid for 12 months. Avoid freeze / thaw cycles.

Shipping

The product is shipped with ice pack, upon receipt, store it immediately at the temperature recommended.

Background

Cytokeratin 8 (CK8) has a molecular weight of 52.5 KDa, which belongs to the HMW (high molecular weight) B-type Cytokeratin. CK8 is mainly marked on non-squamous epithelium, thus can be used for the diagnosis of adenocarcinoma and ductal carcinoma. Generally, CK8 is not expressed in squamous cell carcinoma. It is reported that hepatocellular carcinoma mainly express CK8 and CK18.

For Research Use Only