

Recombinant Human TAFI protein (His Tag)

Catalog Number: PDEH100823

Note: Centrifuge before opening to ensure complete recovery of vial contents.

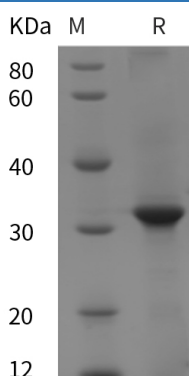
Description

| | |
|----------------------|---|
| Species | Human |
| Source | E.coli-derived Human TAFI protein Glu138-Val386, with an N-terminal His |
| Calculated MW | 27.3 kDa |
| Observed MW | 32 kDa |
| Accession | Q96IY4 |
| Bio-activity | Not validated for activity |

Properties

| | |
|-----------------------|--|
| Purity | > 95% as determined by reducing SDS-PAGE. |
| Endotoxin | < 10 EU/mg of the protein as determined by the LAL method |
| Storage | Generally, lyophilized proteins are stable for up to 12 months when stored at -20 to -80 °C. Reconstituted protein solution can be stored at 4-8°C for 2-7 days. Aliquots of reconstituted samples are stable at < -20°C for 3 months. |
| Shipping | This product is provided as lyophilized powder which is shipped with ice packs. |
| Formulation | Lyophilized from a 0.2 µm filtered solution in PBS with 5% Trehalose and 5% Mannitol. |
| Reconstitution | It is recommended that sterile water be added to the vial to prepare a stock solution of 0.5 mg/mL. Concentration is measured by UV-Vis. |

Data



> 95 % as determined by reducing SDS-PAGE.

Background

Carboxypeptidase B2 (CPB2) is a secreted enzyme that belongs to the peptidase M14 family. CPB2 is synthesized by the liver and circulates in the plasma as a plasminogen-bound zymogen by the liver and circulates in the plasma as a plasminogen-bound zymogen. CPB2 cleaves C-terminal arginine or lysine residues from biologically active peptides, such as kinins or anaphylatoxins, in the circulation regulating their activities. CPB2 also down-regulates fibrinolysis by removing C-terminal lysine residues from fibrin that has already been partially degraded by plasmin. CPB2 exhibits carboxypeptidase activity when it is activated by proteolysis at residue Arg92 of the thrombin/thrombomodulin complex. Activated CPB2 reduces fibrinolysis by removing the fibrin C-terminal residues that are important for the binding and activation of plasminogen.

For Research Use Only

Toll-free: 1-888-852-8623
Web: www.elabscience.com

Tel: 1-832-243-6086
Email: techsupport@elabscience.com

Fax: 1-832-243-6017