

## Recombinant Human SEMA3A Protein(Fc Tag)

Catalog Number: PDMH100251

**Note:** Centrifuge before opening to ensure complete recovery of vial contents.

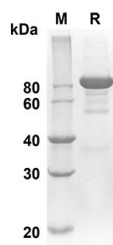
### Description

<b>Species</b>	Human
<b>Source</b>	Mammalian-derived Human SEMA3A protein Lys26-Phe546, with an C-terminal Fc
<b>Calculated MW</b>	82.2 kDa
<b>Observed MW</b>	80-90 kDa
<b>Accession</b>	Q14563
<b>Bio-activity</b>	Not validated for activity

### Properties

<b>Purity</b>	> 90% as determined by reducing SDS-PAGE.
<b>Endotoxin</b>	< 1.0 EU/mg of the protein as determined by the LAL method
<b>Storage</b>	Generally, lyophilized proteins are stable for up to 12 months when stored at -20 to -80 °C. Reconstituted protein solution can be stored at 4-8°C for 2-7 days. Aliquots of reconstituted samples are stable at < -20°C for 3 months.
<b>Shipping</b>	This product is provided as lyophilized powder which is shipped with ice packs.
<b>Formulation</b>	Lyophilized from a 0.2 µm filtered solution in PBS with 5% Trehalose and 5% Mannitol.
<b>Reconstitution</b>	It is recommended that sterile water be added to the vial to prepare a stock solution of 0.5 mg/mL. Concentration is measured by UV-Vis.

### Data



SDS-PAGE analysis of Human SEMA3A proteins, 2 µg/lane of Recombinant Human SEMA3A proteins was resolved with an SDS-PAGE under reducing conditions, showing bands at 82.2KD

### Background

This gene is a member of the semaphorin family and encodes a protein with an Ig-like C2-type (immunoglobulin-like) domain, a PSI domain and a Sema domain. This secreted protein can function as either a chemorepulsive agent, inhibiting axonal outgrowth, or as a chemoattractive agent, stimulating the growth of apical dendrites. In both cases, the protein is vital for normal neuronal pattern development. Increased expression of this protein is associated with an schizophrenia and is seen in a variety of human tumor cell lines. Also, aberrant release of this protein is associated with an the progression of Alzheimer's disease.

### For Research Use Only