

# GPSM2 Polyclonal Antibody

catalog number: E-AB-19960

**Note:** Centrifuge before opening to ensure complete recovery of vial contents.

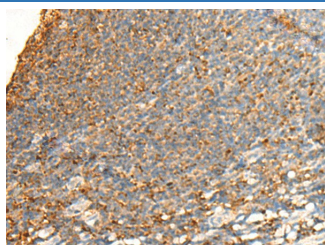
## Description

|                     |  |
|---------------------|--|
| <b>Reactivity</b>   | Human;Mouse  |
| <b>Immunogen</b>    | Synthetic peptide of human GPSM2   |
| <b>Host</b>         | Rabbit   |
| <b>Isotype</b>      | IgG  |
| <b>Purification</b> | Antigen affinity purification  |
| <b>Conjugation</b>  | Unconjugated   |
| <b>buffer</b>       | Phosphate buffered solution, pH 7.4, containing 0.05% stabilizer and 50% glycerol. |

## Applications

|            |            |
|------------|------------|
| <b>IHC</b> | 1:30-1:150 |
|------------|------------|

## Data



Immunohistochemistry of paraffin-embedded Human tonsil tissue using GPSM2 Polyclonal Antibody at dilution of 1:65(×200)

## Preparation & Storage

|                 |  |
|-----------------|--|
| <b>Storage</b>  | Store at -20°C Valid for 12 months. Avoid freeze / thaw cycles.  |
| <b>Shipping</b> | The product is shipped with ice pack, upon receipt, store it immediately at the temperature recommended. |

## Background

The protein encoded by this gene belongs to a family of proteins that modulate activation of G proteins, which transduce extracellular signals received by cell surface receptors into integrated cellular responses. The N-terminal half of this protein contains 10 copies of leu-gly-asn (LGN) repeat, and the C-terminal half contains 4 GoLoco motifs, which are involved in guanine nucleotide exchange. This protein may play a role in neuroblast division and in the development of normal hearing. Mutations in this gene are associated with autosomal recessive nonsyndromic deafness (DFNB82). Alternative splicing results in multiple transcript variants.

## For Research Use Only