

## CD20/MS4A1 Monoclonal Antibody

catalog number: **AN200196P**

**Note:** Centrifuge before opening to ensure complete recovery of vial contents.

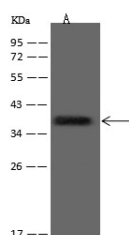
### Description

<b>Reactivity</b>	Human
<b>Immunogen</b>	Recombinant Human CD20/MS4A1 Protein
<b>Host</b>	Mouse
<b>Isotype</b>	IgG1
<b>Clone</b>	12G5
<b>Purification</b>	Protein A
<b>Buffer</b>	0.2 µm filtered solution in PBS

### Applications Recommended Dilution

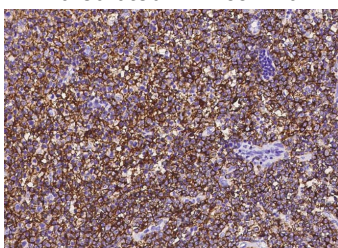
<b>WB</b>	1:500-1:2000
<b>IHC-P</b>	1:100-1:1000
<b>IP</b>	1-5 µL/mg of lysate

### Data

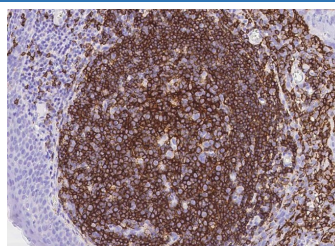


Western Blot with CD20 Monoclonal Antibody at dilution of 1:1000. Lane A: Raji Whole Cell Lysate, Lysates/proteins at 30 µg per lane.

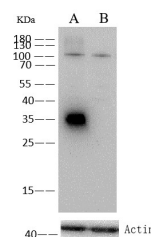
**Observed-MW:36 kDa**  
**Calculated-MW:33 kDa**



Immunohistochemistry of paraffin-embedded human lymphoma using CD20/MS4A1 Monoclonal Antibody at dilution of 1:200.



Immunohistochemistry of paraffin-embedded human tonsil using CD20/MS4A1 Monoclonal Antibody at dilution of 1:200.



Western Blot with CD20 Monoclonal Antibody at dilution of 1:500. Lane A: Raji Whole Cell Lysate, Lane B: CD20 knockout Raji Whole Cell Lysate, Lysates/proteins at 10 µg per lane.

**Observed-MW:36 kDa**  
**Calculated-MW:33 kDa**

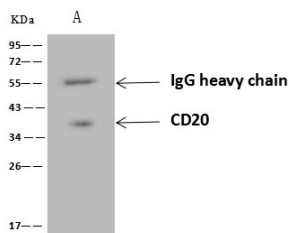
### For Research Use Only

Toll-free: 1-888-852-8623  
Web: [www.elabscience.com](http://www.elabscience.com)

Tel: 1-832-243-6086  
Email: [techsupport@elabscience.com](mailto:techsupport@elabscience.com)

Fax: 1-832-243-6017

Rev. V1.0



Immunoprecipitation analysis using 4  $\mu$ L anti-CD20 Monoclonal Antibody and 60  $\mu$ g of Immunomagnetic beads

Protein A/G. Western blot was performed from the immunoprecipitate using CD20 Monoclonal Antibody at a dilution of 1:100. Lane A: 0.5 mg Raji Whole Cell Lysate

**Observed-MW: 36 kDa**

**Calculated-MW: 33 kDa**

## Preparation & Storage

### Storage

This antibody can be stored at 2°C-8°C for one month without detectable loss of activity. Antibody products are stable for twelve months from date of receipt when stored at -20°C to -80°C. Preservative-Free. Avoid repeated freeze-thaw cycles.

### Shipping

Ice bag

## Background

CD20 is a 297 amino acid (aa) non-glycosylated type III membrane protein that is the founding member of the MS4A tetraspanin protein family. It is expressed on pre-B, naïve and mature B lymphocytes and B-cell lymphomas. CD20 is associated with lipid rafts upon crosslinking, and appears to play a role in regulation of ion influx. The one extracellular segment of 48 aa shows 65% aa sequence identity between human and mouse CD20.

## For Research Use Only

Toll-free: 1-888-852-8623  
Web: [www.elabscience.com](http://www.elabscience.com)

Tel: 1-832-243-6086  
Email: [techsupport@elabscience.com](mailto:techsupport@elabscience.com)

Fax: 1-832-243-6017

Rev. V1.0