

CK-18 Polyclonal Antibody

catalog number: **D-AB-10222L**

Note: Centrifuge before opening to ensure complete recovery of vial contents.

Description

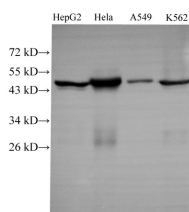
Reactivity	Human;Mouse
Immunogen	Recombinant Mouse CK-18 protein expressed by E.coli
Host	Rabbit
Isotype	IgG
Purification	Antigen Affinity Purification
Buffer	PBS with 0.05% Proclin300, 1% protective protein and 50% glycerol, pH7.4

Applications

Recommended Dilution

WB	1:1000-1:2000
IHC	1:100-1:300

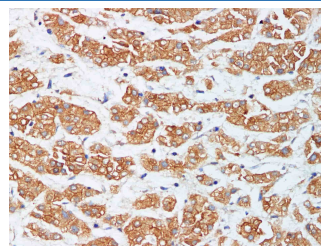
Data



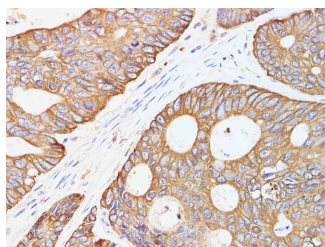
Western Blot CK-18 with Polyclonal Antibody at dilution of 1:1000. .lane 1:HepG2,lane 2:HeLa, lane 3:A549,lane 4:k562

Observed-MW:48 kDa

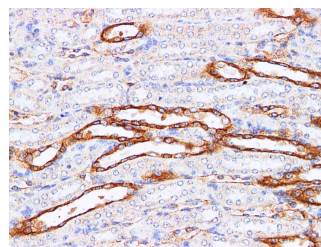
Calculated-MW:48 kDa



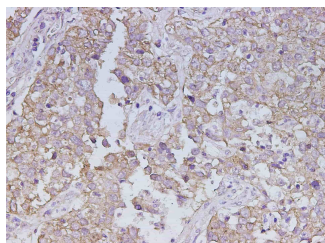
Immunohistochemistry of paraffin-embedded Human liver cancer using CK-18 Polyclonal Antibody at dilution of 1:200



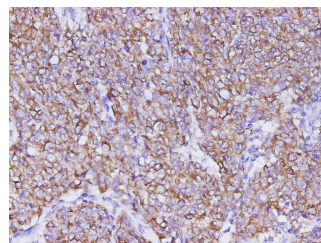
Immunohistochemistry of paraffin-embedded Human colorectal cancer using CK-18 Polyclonal Antibody at dilution of 1:200



Immunohistochemistry of paraffin-embedded Mouse kidney using CK-18 Polyclonal Antibody at dilution of 1:200



Immunohistochemistry of paraffin-embedded Human lung cancer using CK-18 Polyclonal Antibody at dilution of 1:300



Immunohistochemistry of paraffin-embedded Human cervical carcinoma using CK-18 Polyclonal Antibody at dilution of 1:300

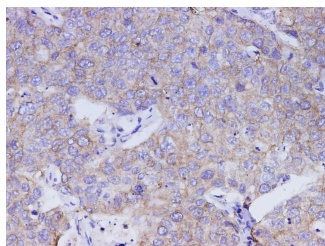
For Research Use Only

Toll-free: 1-888-852-8623
Web: www.elabscience.com

Tel: 1-832-243-6086
Email: techsupport@elabscience.com

Fax: 1-832-243-6017

Rev. V2.1



Immunohistochemistry of paraffin-embedded Human gastric cancer using CK-18 Polyclonal Antibody at dilution of 1:300

Preparation & Storage

Storage

Store at -20°C Valid for 12 months. Avoid freeze / thaw cycles.

Shipping

The product is shipped with ice pack, upon receipt, store it immediately at the temperature recommended.

Background

Cytokeratin 18 (CK18) has a molecular weight of 45 KDa, which is a low molecular weight type A cytokeratin. It is a marker of simple epithelium, including glandular epithelium. The stratified squamous epithelium is generally negative. CK18 is mainly used in the diagnosis of adenocarcinoma.

For Research Use Only

Toll-free: 1-888-852-8623
Web: www.elabscience.com

Tel: 1-832-243-6086
Email: techsupport@elabscience.com

Fax: 1-832-243-6017

Rev. V2.1