

## Recombinant Keap1 Monoclonal Antibody

catalog number: **E-AB-81505**

**Note:** Centrifuge before opening to ensure complete recovery of vial contents.

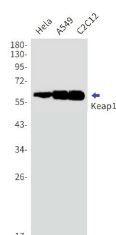
### Description

<b>Reactivity</b>	Human;Mouse
<b>Immunogen</b>	Recombinant protein of human Keap1
<b>Host</b>	Rabbit
<b>Isotype</b>	IgG
<b>Clone</b>	R02-1H7
<b>Purification</b>	Affinity Purified
<b>Buffer</b>	50mM Tris-Glycine(pH 7.4), 0.15M NaCl, 40% Glycerol, 0.05% stabilizer and 0.05% protective protein.

### Applications

Applications	Recommended Dilution
<b>WB</b>	1:500-1:1000
<b>IHC</b>	1:20-1:50

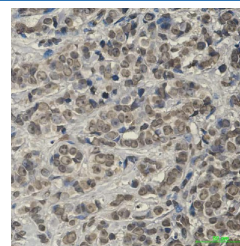
### Data



Western blot detection of Keap1 in HeLa,A549,C2C12 cell lysates using Keap1 Rabbit mAb(1:1000 diluted).Predicted band size:70kDa.Observed band size:60-64kDa.

**Observed-MW:60 /64 kDa**

**Calculated-MW:70 kDa**



Immunohistochemical of Keap1 in Human breast cancer tissue using Keap1 antibody at dilution 1:20

### Preparation & Storage

<b>Storage</b>	Store at -20°C Valid for 12 months. Avoid freeze / thaw cycles.
<b>Shipping</b>	The product is shipped with ice pack,upon receipt,store it immediately at the temperature recommended.

### Background

KEAP1,also named as INRF2,KIAA0132 and KLHL19,is part of a multiprotein complex that contains the CUL3-ROC1 ubiquitin ligase,which can ubiquitinate the N-terminal domain of NRF2. Two molecules of KEAP1 bind to two distinct sites in the N-terminal region of NRF2,the ETGE and DLG sites,which affect the KEAP1-NRF2 interaction and/or its physiological consequences. KEAP1 retains NFE2L2/NRF2 in the cytosol. It functions as substrate adapter protein for the E3 ubiquitin ligase complex formed by CUL3 and RBX1. It also retains BPTF in the cytosol. This antibody is a mouse monoclonal antibody raised against residues near the C terminus of human KEAP1.

### For Research Use Only