

## Recombinant Mouse TIMP2/TIMP-2 Protein (His Tag)

**Catalog Number:** PKSM041160

**Note:** Centrifuge before opening to ensure complete recovery of vial contents.

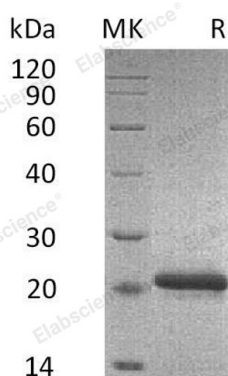
### Description

<b>Species</b>	Mouse
<b>Source</b>	HEK293 Cells-derived Mouse TIMP2/TIMP-2 protein Cys27-Pro220, with an C-terminal His
<b>Calculated MW</b>	22.5 kDa
<b>Observed MW</b>	21 kDa
<b>Accession</b>	P25785
<b>Bio-activity</b>	Not validated for activity

### Properties

<b>Purity</b>	> 95 % as determined by reducing SDS-PAGE.
<b>Concentration</b>	Subject to label value.
<b>Endotoxin</b>	< 1.0 EU per µg of the protein as determined by the LAL method.
<b>Storage</b>	Store at < -20°C, stable for 6 months. Please minimize freeze-thaw cycles.
<b>Shipping</b>	This product is provided as liquid. It is shipped at frozen temperature with blue ice/ gel packs. Upon receipt, store it immediately at < - 20°C.
<b>Formulation</b>	Supplied as a 0.2 µm filtered solution of PBS, pH7.4.

### Data



> 95 % as determined by reducing SDS-PAGE.

### Background

Mouse Metalloproteinase inhibitor 2 (TIMP-2), belongs to a family of proteins that regulate the activation and proteolytic activity of matrix metalloproteinases (MMPs). There are four mammalian members of the family; TIMP-1, TIMP-2, TIMP-3, and TIMP-4. The TIMP-2 is detected in testis, retina, hippocampus and cerebral cortex. The function of TIMP 2 protein is to inhibit MMPs non covalently by the formation of binary complexes. Complexes with metalloproteinases (such as collagenases) and irreversibly inactivates them by binding to their catalytic zinc cofactor. And the interaction with MMP-14 facilitates the activation of pro-MMP-2. It has been shown that the binding of TIMP 2 to α3β1 integrin results in the inhibition of endothelial cell proliferation and angiogenesis.

### For Research Use Only

Toll-free: 1-888-852-8623  
Web: [www.elabscience.com](http://www.elabscience.com)

Tel: 1-832-243-6086  
Email: [techsupport@elabscience.com](mailto:techsupport@elabscience.com)

Fax: 1-832-243-6017