

Recombinant Human AMY1A Protein(His Tag)

Catalog Number: PDMH100164

Note: Centrifuge before opening to ensure complete recovery of vial contents.

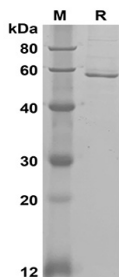
Description

Species	Human
Source	Mammalian-derived Human AMY1A protein Met1-Leu511, with an C-terminal His
Calculated MW	56.1 kDa
Observed MW	58 kDa
Accession	P0DUB6
Bio-activity	Not validated for activity

Properties

Purity	> 95% as determined by reducing SDS-PAGE.
Endotoxin	< 1.0 EU/mg of the protein as determined by the LAL method
Storage	Generally, lyophilized proteins are stable for up to 12 months when stored at -20 to -80 °C. Reconstituted protein solution can be stored at 4-8°C for 2-7 days. Aliquots of reconstituted samples are stable at < -20°C for 3 months.
Shipping	This product is provided as lyophilized powder which is shipped with ice packs.
Formulation	Lyophilized from a 0.2 µm filtered solution in PBS with 5% Trehalose and 5% Mannitol.
Reconstitution	It is recommended that sterile water be added to the vial to prepare a stock solution of 0.5 mg/mL. Concentration is measured by UV-Vis.

Data



SDS-PAGE analysis of Human AMY1A proteins, 2µg/lane of Recombinant Human AMY1A proteins was resolved with SDS-PAGE under reducing conditions, showing bands at 58 kDa

Background

Calcium-binding enzyme that initiates starch digestion in the oral cavity. Catalyzes the hydrolysis of internal (1→4)-alpha-D-glucosidic bonds, yielding a mixture of maltose, isomaltose, small amounts of glucose as well as small linear and branched oligosaccharides called dextrins.

For Research Use Only