

XRCC4 Monoclonal Antibody

catalog number: E-AB-22044

Note: Centrifuge before opening to ensure complete recovery of vial contents.

Description

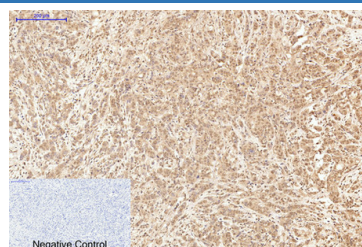
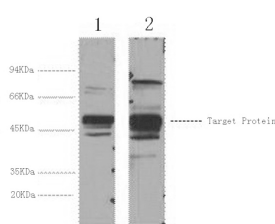
Reactivity	Human
Immunogen	Synthetic Peptide
Host	Mouse
Isotype	IgG
Clone	8K2
Purification	Protein A purification
Conjugation	Unconjugated
buffer	Phosphate buffered solution, pH 7.4, containing 0.05% stabilizer, 0.5% protein protectant and 50% glycerol.

Applications

Recommended Dilution

WB	1:500-1:2000
IHC	1:50-300
IF	1:50-1:200
IP	1:100-1:300

Data

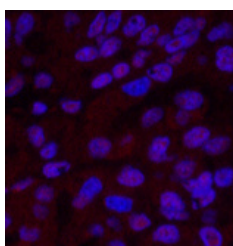


Western Blot analysis of 1) HeLa, 2) 293T cells using XRCC4 Monoclonal Antibody at dilution of 1:3000.

Immunohistochemistry of paraffin-embedded Human breast cancer tissue using XRCC4 Monoclonal Antibody at dilution of 1:200.

Observed-MV:38 kDa

Calculated-MV:38 kDa



Immunofluorescence analysis of Human liver cancer tissue using XRCC4 Monoclonal Antibody at dilution of 1:200.

Preparation & Storage

Storage	Store at -20°C Valid for 12 months. Avoid freeze / thaw cycles.
Shipping	The product is shipped with ice pack, upon receipt, store it immediately at the temperature recommended.

Background

For Research Use Only

XRCC4 Monoclonal Antibody

catalog number: E-AB-22044



Involved in DNA non-homologous end joining (NHEJ) required for double-strand break repair and V(D)J recombination. Binds to DNA and to DNA ligase IV (LIG4). The LIG4-XRCC4 complex is responsible for the NHEJ ligation step, and XRCC4 enhances the joining activity of LIG4. Binding of the LIG4-XRCC4 complex to DNA ends is dependent on the assembly of the DNA-dependent protein kinase complex DNA-PK to these DNA ends.

For Research Use Only

A Reliable Research Partner in Life Science and Medicine
Tel: 400-999-2100

Email: techsupport@elabscience.cn

Web: www.elabscience.cn

Rev. V1.7