

beta Tubulin Monoclonal Antibody

catalog number: E-AB-48019

Note: Centrifuge before opening to ensure complete recovery of vial contents.

Description

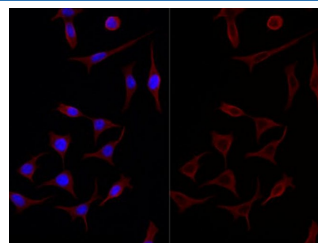
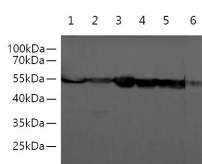
Reactivity	Human;Mouse;E.coli;Scallop;Zebrafish
Immunogen	Recombinant human TUBB protein
Host	Mouse
Isotype	IgG2a
Clone	3A7
Purification	Protein A/G Purification
Conjugation	Unconjugated
buffer	PBS with 0.05% proclin 300, 1% protective protein and 50% glycerol,pH7.4

Applications

Recommended Dilution

WB	1:5000-10000
IF	1:2000-4000

Data



Western blotting with anti-Beta Tubulin monoclonal antibody at dilution of 1:5000. Lane 1: Hela cell lysates, Lane 2: Caco-2 cell lysates, Lane 3: HT-29 cell lysates, Lane 4: NIH/3T3 cell lysates, Lane 5: Raw264.7 cell lysates, Lane 6: Rat liver

Immunofluorescent analysis of HEK293 cells with anti-beta Tubulin monoclonal antibody at dilution of 1:4000.

Observed-MV:55 kDa

Calculated-MV:55 kDa

Preparation & Storage

Storage	Store at -20°C Valid for 12 months. Avoid freeze / thaw cycles.
Shipping	The product is shipped with ice pack, upon receipt, store it immediately at the temperature recommended.

Background

In eukaryotes there are six members of the tubulin superfamily. α - and β -tubulins polymerize into microtubules, a major component of the eukaryotic cytoskeleton. Microtubules function in many essential cellular processes, including mitosis. Both α and β tubulins have a mass of around 50 kDa. Tubulin was long thought to be specific to eukaryotes. Beta-tubulin gene is commonly used as a loading control for western blot.

For Research Use Only