

## Recombinant Human NCR3/NKp30 Protein (His Tag)

**Catalog Number:** PKSH032786

**Note:** Centrifuge before opening to ensure complete recovery of vial contents.

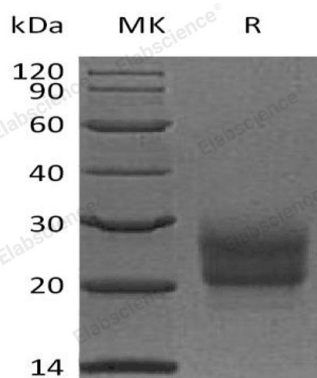
### Description

<b>Species</b>	Human
<b>Source</b>	HEK293 Cells-derived Human NCR3;NKp30 protein Leu19-Thr138, with an C-terminal His
<b>Calculated MW</b>	12.8 kDa
<b>Observed MW</b>	19-33 kDa
<b>Accession</b>	O14931
<b>Bio-activity</b>	Not validated for activity

### Properties

<b>Purity</b>	> 95 % as determined by reducing SDS-PAGE.
<b>Endotoxin</b>	< 1.0 EU per µg of the protein as determined by the LAL method.
<b>Storage</b>	Generally, lyophilized proteins are stable for up to 12 months when stored at -20 to -80°C. Reconstituted protein solution can be stored at 4-8°C for 2-7 days. Aliquots of reconstituted samples are stable at < -20°C for 3 months.
<b>Shipping</b>	This product is provided as lyophilized powder which is shipped with ice packs.
<b>Formulation</b>	Lyophilized from a 0.2 µm filtered solution of 20mM PB, 150mM NaCl, pH 7.2. Normally 5% - 8% trehalose, mannitol and 0.01% Tween 80 are added as protectants before lyophilization. Please refer to the specific buffer information in the printed manual.
<b>Reconstitution</b>	Please refer to the printed manual for detailed information.

### Data



> 95 % as determined by reducing SDS-PAGE.

### Background

Natural Cytotoxicity Triggering Receptor 3 (NCR3) along with NKp44 and NKp46 constitute a group of receptors termed "Natural Cytotoxicity Receptors". They play a major role in triggering NK-mediated killing of most tumor cell lines. NKp30 is a type I transmembrane protein having a single extracellular V-like immunoglobulin domain. NKp30 is selectively expressed both in resting and activated human NK cells. In addition; NKp30 is also involved in NK-mediated induction of dendritic cell (DC) maturation. It has been demonstrated that NK cell activation signaling specifically induces lytic activity against several tumor cell types and synthesis of new NF-κB dependent proteins during the initiation of cytotoxicity.

### For Research Use Only

Toll-free: 1-888-852-8623  
Web: [www.elabscience.com](http://www.elabscience.com)

Tel: 1-832-243-6086  
Email: [techsupport@elabscience.com](mailto:techsupport@elabscience.com)

Fax: 1-832-243-6017