

# Recombinant Human $\beta$ -Defensin 1/DEFB1 Protein

Catalog Number: PKSH033264



**Note:** Centrifuge before opening to ensure complete recovery of vial contents.

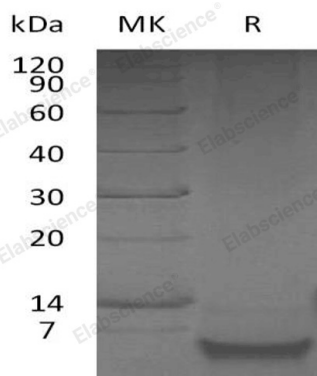
## Description

<b>Species</b>	Human
<b>Mol_Mass</b>	5.1 kDa
<b>Accession</b>	P60022
<b>Bio-activity</b>	Not validated for activity

## Properties

<b>Purity</b>	> 95 % as determined by reducing SDS-PAGE.
<b>Endotoxin</b>	< 1.0 EU per $\mu$ g of the protein as determined by the LAL method.
<b>Storage</b>	Generally, lyophilized proteins are stable for up to 12 months when stored at -20 to -80 $^{\circ}$ C. Reconstituted protein solution can be stored at 4-8 $^{\circ}$ C for 2-7 days. Aliquots of reconstituted samples are stable at < -20 $^{\circ}$ C for 3 months.
<b>Shipping</b>	This product is provided as lyophilized powder which is shipped with ice packs.
<b>Formulation</b>	Lyophilized from a 0.2 $\mu$ m filtered solution of 20mM PB, 130mM NaCl, pH 7.4. Normally 5% - 8% trehalose, mannitol and 0.01% Tween 80 are added as protectants before lyophilization. Please refer to the specific buffer information in the printed manual.
<b>Reconstitution</b>	Please refer to the printed manual for detailed information.

## Data



> 95 % as determined by reducing SDS-PAGE.

## Background

$\beta$ -Defensin 1 (DEFB1) is a member of the  $\beta$ -defensin family, which is highly expressed by epithelial cells.  $\beta$ -defensins are expressed as the C-terminal portion of precursors and are released by proteolytic cleavage of a signal peptide.  $\beta$ -defensins contain a six-cysteine motif that forms three intra-molecular disulfide bonds.  $\beta$ -defensin 1 is an antimicrobial peptide implicated in the resistance of epithelial surfaces to microbial colonization. Defects in  $\beta$ -Defensin-1 contribute to asthma diagnosis, with apparent gender-specific effects in human.  $\beta$ -defensin 1 may also play a role in the pathogenesis of severe sepsis. In addition,  $\beta$ -defensin 1 is associated with induction profiles in gingival keratinocytes.

## For Research Use Only

A Reliable Research Partner in Life Science and Medicine  
Tel:400-999-2100

Email:[techsupport@elabscience.cn](mailto:techsupport@elabscience.cn)

Web:[www.elabscience.cn](http://www.elabscience.cn)

Rev. V3.5