

# MTMR4 Polyclonal Antibody

Catalog Number: E-AB-65276



**Note:** Centrifuge before opening to ensure complete recovery of vial contents.

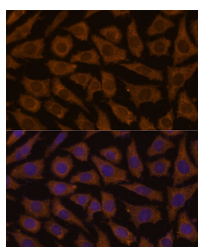
## Description

<b>Reactivity</b>	Human, Mouse, Rat
<b>Immunogen</b>	Recombinant fusion protein of human MTMR4 (NP_004678.3).
<b>Host</b>	Rabbit
<b>Isotype</b>	IgG
<b>Purification</b>	Affinity purification
<b>Conjugation</b>	Unconjugated
<b>Formulation</b>	PBS with 0.02% sodium azide, 50% glycerol, pH7.3.

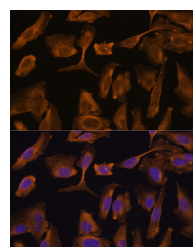
## Applications Recommended Dilution

<b>IF</b>	1:50-1:200
-----------	------------

## Data



Immunofluorescence analysis of L929 cells using MTMR4 Polyclonal Antibody at dilution of 1:100 (40x lens). Blue: DAPI for nuclear staining.



Immunofluorescence analysis of U-2 OS cells using MTMR4 Polyclonal Antibody at dilution of 1:100 (40x lens). Blue: DAPI for nuclear staining.

## Preparation & Storage

**Storage** Store at -20°C. Avoid freeze / thaw cycles.

## Background

MTMR4 (Myotubularin Related Protein 4) is a Protein Coding gene. Diseases associated with MTMR4 include Mulibrey Nanism and Myopathy, Centronuclear, X-Linked. Among its related pathways are Signaling by GPCR and Inositol phosphate metabolism (KEGG). Gene Ontology (GO) annotations related to this gene include phosphatase activity and protein serine/threonine phosphatase activity. An important paralog of this gene is MTMR3.

## For Research Use Only

A Reliable Research Partner in Life Science and Medicine

Toll-free: 1-888-852-8623

Web: [www.elabscience.com](http://www.elabscience.com)

Tel: 1-832-243-6086

Email: [techsupport@elabscience.com](mailto:techsupport@elabscience.com)

Fax: 1-832-243-6017