

## ECE2 Polyclonal Antibody

**catalog number: E-AB-16986**

**Note:** Centrifuge before opening to ensure complete recovery of vial contents.

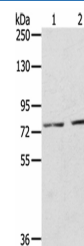
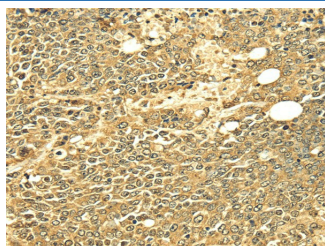
### Description

<b>Reactivity</b>	Human;Mouse
<b>Immunogen</b>	Fusion protein of human ECE2
<b>Host</b>	Rabbit
<b>Isotype</b>	IgG
<b>Purification</b>	Affinity purification
<b>Buffer</b>	Phosphate buffered solution, pH 7.4, containing 0.05% stabilizer and 50% glycerol.

### Applications Recommended Dilution

<b>WB</b>	1:500-2000
<b>IHC</b>	1:30-150

### Data



Immunohistochemistry of paraffin-embedded Human ovarian cancer using ECE2 Polyclonal Antibody at dilution of 1/25

Western Blot analysis of A172 cells and Mouse liver tissue using ECE2 Polyclonal Antibody at dilution of 1/350

**Calculated-MW:100 kDa**

### Preparation & Storage

<b>Storage</b>	Store at -20°C Valid for 12 months. Avoid freeze / thaw cycles.
<b>Shipping</b>	The product is shipped with ice pack, upon receipt, store it immediately at the temperature recommended.

### Background

This gene encodes a member of the M13 family, which includes type 2 integral membrane metalloproteinases. The encoded enzyme is a membrane-bound zinc-dependent metalloprotease. The enzyme catalyzes the cleavage of big endothelin to produce the vasoconstrictor endothelin-1, and plays a role in the processing of several neuroendocrine peptides. It may also have methyltransferase activity. Alternative splicing results in multiple transcript variants.

### For Research Use Only