

TTL Polyclonal Antibody

catalog number: **E-AB-90040**

Note: Centrifuge before opening to ensure complete recovery of vial contents.

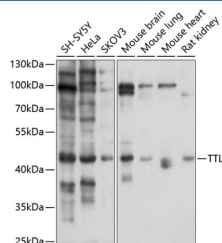
Description

Reactivity	Human;Mouse;Rat
Immunogen	Recombinant fusion protein of human TTL
Host	Rabbit
Isotype	IgG
Purification	Affinity purification
Buffer	Phosphate buffered solution, pH 7.4, containing 0.05% stabilizer and 50% glycerol.

Applications Recommended Dilution

WB	1:1000-1:4000
-----------	---------------

Data



Western blot analysis of extracts of various cell lines using
TTL Polyclonal Antibody at 1:1000 dilution.

Observed-MV:43 kDa

Calculated-MV:43 kDa

Preparation & Storage

Storage	Store at -20°C Valid for 12 months. Avoid freeze / thaw cycles.
Shipping	The product is shipped with ice pack, upon receipt, store it immediately at the temperature recommended.

Background

TTL is a cytosolic enzyme involved in the posttranslational modification of alpha-tubulin (see MIM 602529). Alpha-tubulin within assembled microtubules is detyrosinated over time at the C terminus. After microtubule disassembly, TTL restores the tyrosine residues and consequently participates in a cycle of tubulin detyrosination and tyrosination (Erck et al., 2003 [PubMed 14571137]).[supplied by OMIM, Mar 2008]

For Research Use Only