

# Recombinant Human beta Amylase/AMY2 Protein (His Tag)

Catalog Number: PKSH033247



**Note:** Centrifuge before opening to ensure complete recovery of vial contents.

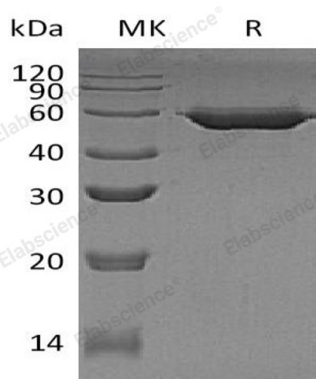
## Description

<b>Species</b>	Human
<b>Mol_Mass</b>	56.9 kDa
<b>Accession</b>	P19961
<b>Bio-activity</b>	Not validated for activity

## Properties

<b>Purity</b>	> 95 % as determined by reducing SDS-PAGE.
<b>Endotoxin</b>	< 1.0 EU per µg of the protein as determined by the LAL method.
<b>Storage</b>	Store at < -20°C, stable for 6 months. Please minimize freeze-thaw cycles.
<b>Shipping</b>	This product is provided as liquid. It is shipped at frozen temperature with blue ice/gel packs. Upon receipt, store it immediately at < - 20°C.
<b>Formulation</b>	Supplied as a 0.2 µm filtered solution of 20mM Tris-HCl, pH 8.0.
<b>Reconstitution</b>	Not Applicable

## Data



> 95 % as determined by reducing SDS-PAGE.

## Background

Alpha-amylase 2B is an enzyme that in humans is encoded by the AMY2B gene. Alpha-amylase 2B is a secreted protein and belongs to the glycosyl hydrolase 13 family. It hydrolyzes 1,4-alpha-glucoside bonds in oligosaccharides and polysaccharides, and thus catalyze the first step in digestion of dietary starch and glycogen. The human genome has a cluster of several amylase genes that are expressed at high levels in either salivary gland or pancreas. This gene encodes an amylase isoenzyme produced by the pancreas. Diseases associated with AMY2B include pancreatitis, and thyroiditis, and among its related super-pathways are Metabolic pathways and MPS IIIC - Sanfilippo syndrome C.

## For Research Use Only

A Reliable Research Partner in Life Science and Medicine  
Tel: 400-999-2100

Email: [techsupport@elabscience.cn](mailto:techsupport@elabscience.cn)

Web: [www.elabscience.cn](http://www.elabscience.cn)

Rev. V3.2