

Recombinant Human ATG5 Protein

Catalog Number: PKSH032101

Note: Centrifuge before opening to ensure complete recovery of vial contents.

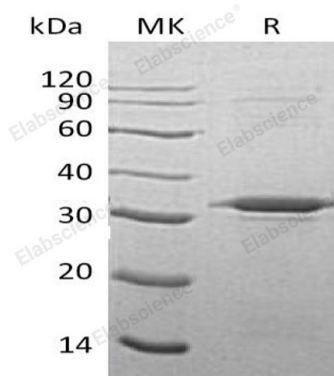
Description

Species	Human
Source	E.coli-derived Human ATG5 protein Met 1-Asp275
Calculated MW	32.4 kDa
Observed MW	33 kDa
Accession	Q9H1Y0
Bio-activity	Not validated for activity

Properties

Purity	> 90 % as determined by reducing SDS-PAGE.
Concentration	Subject to label value.
Endotoxin	< 1.0 EU per µg of the protein as determined by the LAL method.
Storage	Store at < -20°C, stable for 6 months. Please minimize freeze-thaw cycles.
Shipping	This product is provided as liquid. It is shipped at frozen temperature with blue ice/ gel packs. Upon receipt, store it immediately at < -20°C.
Formulation	Supplied as a 0.2 µm filtered solution of 20mM Tris-HCl, 0.2M NaCl, 1mM DTT, 40% Glycerol, pH 8.0.

Data



> 90 % as determined by reducing SDS-PAGE.

Background

ATG5 is an E2 ubiquitin ligase which is necessary for autophagy. Its expression is a relatively late event in the apoptotic process, occurring downstream of caspase activity, dramatically highly expressed in apoptotic cells. It is activated by ATG7, conjugates to ATG12 and associates with isolation membrane to form cup-shaped isolation membrane and autophagosome. The conjugate complex detaches from the membrane immediately before or after autophagosome formation is completed. ATG5 plays an important role in the apoptotic process, possibly within the modified cytoskeleton.

For Research Use Only

Toll-free: 1-888-852-8623
Web: www.elabscience.com

Tel: 1-832-243-6086
Email: techsupport@elabscience.com

Fax: 1-832-243-6017