

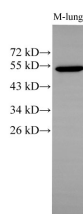
CK-7 Polyclonal Antibody

catalog number: D-AB-10175L

Note: Centrifuge before opening to ensure complete recovery of vial contents.

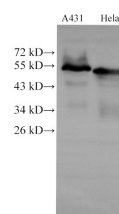
Description	
Reactivity	Human;Mouse
Immunogen	Recombinant Mouse Krt7 protein expressed by E.coli
Host	Rabbit
Isotype	IgG
Purification	Antigen Affinity Purification
Conjugation	Unconjugated
Buffer	PBS with 0.05% Proclin300, 1% protective protein and 50% glycerol, pH7.4
Applications	Recommended Dilution
WB	1:500-1:2000
IHC	1:250-1:500

Data



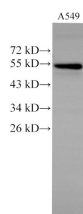
Western Blot analysis of Mouse lung using CK-7 Polyclonal Antibody at dilution of 1:500

Observed-MW:51 kDa
Calculated-MW:51 kDa



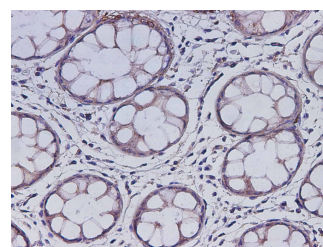
Western Blot analysis of A431 and HeLa cells using CK-7 Polyclonal Antibody at dilution of 1:2000

Observed-MW:51 kDa
Calculated-MW:51 kDa

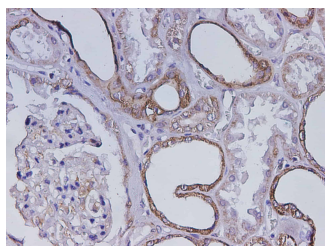


Western Blot analysis of A549 cells using CK-7 Polyclonal Antibody at dilution of 1:2000

Observed-MW:51 kDa
Calculated-MW:51 kDa



Immunohistochemistry of paraffin-embedded Mouse colon using Krt7 Polyclonal Antibody at dilution of 1:500



Immunohistochemistry of paraffin-embedded Mouse kidney
using Krt7 Polyclonal Antibody at dilution of 1:500

Preparation & Storage

Storage	Store at -20°C Valid for 12 months. Avoid freeze / thaw cycles.
Shipping	The product is shipped with ice pack, upon receipt, store it immediately at the temperature recommended.

Background

Keratins are a large family of proteins that form the intermediate filament cytoskeleton of epithelial cells, which are classified into two major sequence types. Type I keratins are a group of acidic intermediate filament proteins, including K9–K23, and the hair keratins Ha1–Ha8. Type II keratins are the basic or neutral counterparts to the acidic type I keratins, including K1–K8, and the hair keratins, Hb1–Hb6. KRT7, also named as cytokeratin 7, is one member of type II basic cytokeratin. It is specifically expressed in the simple epithelia lining the cavities of the internal organs and in the gland ducts and blood vessels, and their neoplasms. KRT7 is marker of epithelial tissues, but not present in carcinomas of stratified squamous cell origin. This antibody is specifically against KRT7.