

SerpinB1/ELANH2 Monoclonal Antibody

catalog number: **AN200220P**

Note: Centrifuge before opening to ensure complete recovery of vial contents.

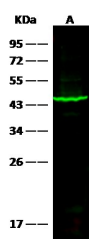
Description

Reactivity	Human
Immunogen	Recombinant Human SerpinB1/ELANH2 protein
Host	Mouse
Isotype	IgG1
Clone	3G11
Purification	Protein A
Buffer	0.2 µm filtered solution in PBS

Applications Recommended Dilution

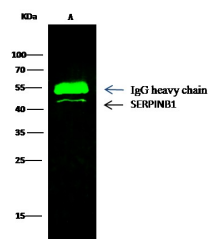
WB	1:500-1:1000
IP	1-2 µL/mg of lysate

Data



Western Blot with SERPINB1 Monoclonal Antibody at dilution of 1:500 dilution. Lane A: NCI-H460 Whole Cell Lysate, Lysates/proteins at 30 µg per lane.

Observed-MW:43 kDa
Calculated-MW:43 kDa



Immunoprecipitation analysis using 0.5 µL anti-SERPINB1 Monoclonal Antibody and 15 µL of 50 % Protein G agarose. Western blot was performed from the immunoprecipitate using SERPINB1 Monoclonal Antibody at a dilution of 1:500.

Lane A: 0.5 mg 293T Whole Cell Lysate

Observed-MW:43 kDa
Calculated-MW:43 kDa

Preparation & Storage

Storage	This antibody can be stored at 2°C-8°C for one month without detectable loss of activity. Antibody products are stable for twelve months from date of receipt when stored at -20°C to -80°C. Preservative-Free. Avoid repeated freeze-thaw cycles.
Shipping	Ice bag

Background

The protein encoded by this gene is a member of the serpin family of proteinase inhibitors. Members of this family maintain homeostasis by neutralizing overexpressed proteinase activity through their function as suicide substrates. This protein inhibits the neutrophil-derived proteinases neutrophil elastase, cathepsin G, and proteinase-3 and thus protects tissues from damage at inflammatory sites. Alternative splicing results in multiple transcript variants.

For Research Use Only