

Recombinant YTHDF1 Monoclonal Antibody

catalog number: **AN301008L**

Note: Centrifuge before opening to ensure complete recovery of vial contents.

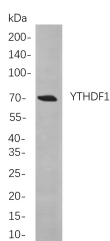
Description

Reactivity	Human;Mouse;Rat
Immunogen	Recombinant Human YTHDF1 protein
Host	Rabbit
Isotype	IgG, κ
Clone	1A6
Purification	Protein A
Buffer	PBS, 50% glycerol, 0.05% Proclin 300, 0.05% protein protectant.

Applications

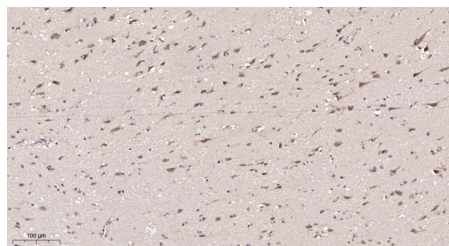
Applications	Recommended Dilution
IHC	1:200-1:1000
WB	1:1000-1:5000

Data

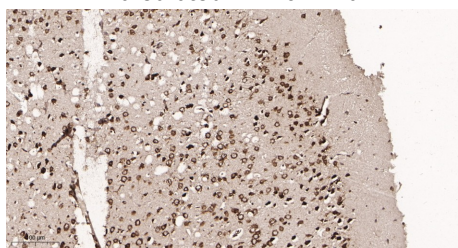


Western Blot with Recombinant YTHDF1 Monoclonal Antibody at dilution of 1:1000 dilution. Lane A: MCF7 cells.

Observed-MW:70 kDa
Calculated-MW:61 kDa



Immunohistochemistry of paraffin-embedded human brain tissue using Recombinant YTHDF1 Monoclonal Antibody at dilution of 1:200.



Immunohistochemistry of paraffin-embedded mouse brain tissue using Recombinant YTHDF1 Monoclonal Antibody at dilution of 1:200.

Preparation & Storage

Storage	Store at -20°C Valid for 12 months. Avoid freeze / thaw cycles.
Shipping	Ice bag

Background

Enables N6-methyladenosine-containing RNA binding activity and ribosome binding activity. Involved in mRNA destabilization; positive regulation of translational initiation; and stress granule assembly. Located in P-body and cytoplasmic stress granule.

For Research Use Only