

## IL1RN Polyclonal Antibody

catalog number: **E-AB-92328**

**Note:** Centrifuge before opening to ensure complete recovery of vial contents.

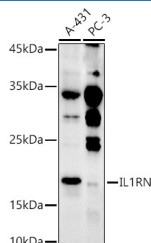
### Description

<b>Reactivity</b>	Human;Mouse
<b>Immunogen</b>	Recombinant fusion protein of mouse IL1RN
<b>Host</b>	Rabbit
<b>Isotype</b>	IgG
<b>Purification</b>	Affinity purification
<b>Buffer</b>	Phosphate buffered solution, pH 7.4, containing 0.05% stabilizer and 50% glycerol.

### Applications

Applications	Recommended Dilution
<b>WB</b>	1:500-1:2000
<b>IF</b>	1:50-1:200

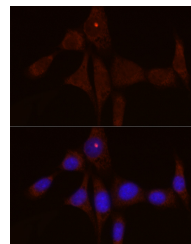
### Data



Western blot analysis of extracts of various cell lines using IL1RN Polyclonal Antibody at 1:500 dilution.

**Observed-MW:18 kDa**

**Calculated-MW:20 kDa**



Immunofluorescence analysis of NIH/3T3 cells using IL1RN Polyclonal Antibody at dilution of 1:50 (40x lens). Blue: DAPI for nuclear staining.

### Preparation & Storage

<b>Storage</b>	Store at -20°C Valid for 12 months. Avoid freeze / thaw cycles.
<b>Shipping</b>	The product is shipped with ice pack, upon receipt, store it immediately at the temperature recommended.

### Background

Predicted to enable cytokine receptor binding activity. Acts upstream of or within insulin secretion and lipid metabolic process. Located in extracellular region and vesicle. Human ortholog(s) of this gene implicated in several diseases, including autoimmune disease (multiple); eye disease (multiple); kidney failure (multiple); lung disease (multiple); and vascular disease (multiple). Orthologous to human IL1RN (interleukin 1 receptor antagonist).

### For Research Use Only