

Note: Centrifuge before opening to ensure complete recovery of vial contents.

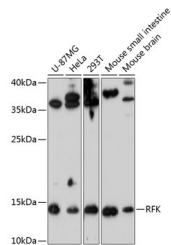
Description

Reactivity	Human, Mouse
Immunogen	Recombinant fusion protein of human RFK
Host	Rabbit
Isotype	IgG
Purification	Affinity purification
Conjugation	Unconjugated
Formulation	PBS with 0.01% thiomersal, 50% glycerol, pH 7.3.

Applications Recommended Dilution

WB	1:500-1:2000
-----------	--------------

Data



Western blot analysis of extracts of various cell lines using RFK Polyclonal Antibody at 1:3000 dilution.

Observed MW: 14kDa
Calculated Mw: 17kDa

Preparation & Storage

Storage Store at -20°C. Avoid freeze/thaw cycles.

Background

Riboflavin kinase (RFK; EC 2.7.1.26) is an essential enzyme that catalyzes the phosphorylation of riboflavin (vitamin B2) to form flavin mononucleotide (FMN), an obligatory step in vitamin B2 utilization and flavin cofactor synthesis (Karthikeyan et al., 2003 [PubMed 12623014]). [supplied by OMIM, Nov 2009]

For Research Use Only

A Reliable Research Partner in Life Science and Medicine

Toll-free: 1-888-852-8623

Web: www.elabscience.com

Tel: 1-832-243-6086

Email: techsupport@elabscience.com

Fax: 1-832-243-6017