

Phospho-FOXO1/3 (Ser322/S325) Polyclonal Antibody

catalog number: E-AB-21016

Note: Centrifuge before opening to ensure complete recovery of vial contents.

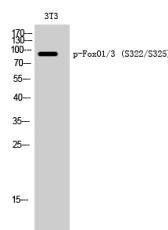
Description

Reactivity	Human;Mouse;Rat
Immunogen	Synthesized peptide derived from human FoxO1/3 around the phosphorylation site of Ser322/S325
Host	Rabbit
Isotype	IgG
Purification	Affinity purification
Buffer	Phosphate buffered solution, pH 7.4, containing 0.05% stabilizer, 0.5% protein protectant and 50% glycerol.

Applications

Applications	Recommended Dilution
WB	1:500-1:2000
IHC	1:100-1:300

Data



Western Blot analysis of 3T3 cells with Phospho-FoxO1/3
(Ser322/S325) Polyclonal Antibody

Observed-MW:97 kDa

Calculated-MW:70 kDa

Preparation & Storage

Storage	Store at -20°C Valid for 12 months. Avoid freeze / thaw cycles.
Shipping	The product is shipped with ice pack, upon receipt, store it immediately at the temperature recommended.

Background

FOXO1 (Forkhead Box O1) is a Protein Coding gene. Diseases associated with FOXO1 include Rhabdomyosarcoma 2, Alveolar and Rhabdomyosarcoma. Among its related pathways are Constitutive Signaling by AKT1 E17K in Cancer and Common Cytokine Receptor Gamma-Chain Family Signaling Pathways. GO annotations related to this gene include transcription factor activity, sequence-specific DNA binding and chromatin binding. An important paralog of this gene is FOXO3.

FOXO3 (Forkhead Box O3) is a Protein Coding gene. Diseases associated with FOXO3 include Rhabdomyosarcoma and Lung Cancer. Among its related pathways are Development IGF-1 receptor signaling and Constitutive Signaling by AKT1 E17K in Cancer. GO annotations related to this gene include transcription factor activity, sequence-specific DNA binding and protein kinase binding. An important paralog of this gene is FOXO1.

For Research Use Only