

## Recombinant Mouse CPA2 Protein (His Tag)

**Catalog Number: PKSM041201**

**Note:** *Centrifuge before opening to ensure complete recovery of vial contents.*

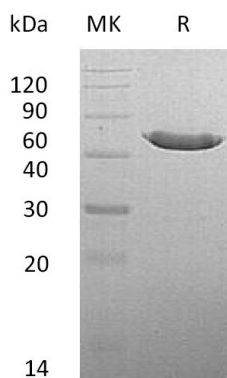
### Description

<b>Species</b>	Mouse
<b>Source</b>	HEK293 Cells-derived Mouse CPA2 protein Gln17-Tyr417, with an C-terminal His
<b>Calculated MW</b>	46.2 kDa
<b>Observed MW</b>	41-50 kDa
<b>Accession</b>	Q504N0
<b>Bio-activity</b>	Not validated for activity

### Properties

<b>Purity</b>	> 95 % as determined by reducing SDS-PAGE.
<b>Endotoxin</b>	< 1.0 EU per µg of the protein as determined by the LAL method.
<b>Storage</b>	Generally, lyophilized proteins are stable for up to 12 months when stored at -20 to -80°C. Reconstituted protein solution can be stored at 4-8°C for 2-7 days. Aliquots of reconstituted samples are stable at < -20°C for 3 months.
<b>Shipping</b>	This product is provided as lyophilized powder which is shipped with ice packs.
<b>Formulation</b>	Lyophilized from a 0.2 µm filtered solution of 20mM Tris-HCl, 150mM NaCl, pH 8.0. Normally 5% - 8% trehalose, mannitol and 0.01% Tween 80 are added as protectants before lyophilization.
<b>Reconstitution</b>	Please refer to the specific buffer information in the printed manual. Please refer to the printed manual for detailed information.

### Data



### Background

Mouse carboxypeptidase A2 (CPA2) is a secreted pancreatic procarboxy-peptidase which belongs to the peptidase M14 family. CPA2 consists of a signal peptide, a pro region and a mature chain. It can be activated after cleavage of the pro peptide. CPA2 cleaves the C-terminal amide or ester bond of peptides that have a free C-terminal carboxyl group. The hydrolytic action of CPA2 was identified with a preference towards long substrates with aromatic amino acids in their C-terminal end, particularly tryptophan.

### For Research Use Only