

## Nestin/NES Monoclonal Antibody

catalog number: AN200172P

**Note:** Centrifuge before opening to ensure complete recovery of vial contents.

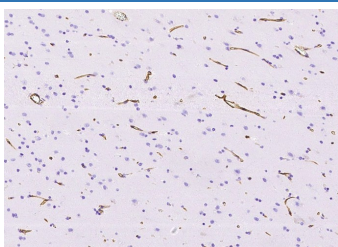
### Description

<b>Reactivity</b>	Human
<b>Immunogen</b>	A synthetic peptide corresponding to the N-terminus of the Human Nestin/NES
<b>Host</b>	Mouse
<b>Isotype</b>	IgG2a
<b>Clone</b>	8D6
<b>Purification</b>	Protein A
<b>Buffer</b>	0.2 µm filtered solution in PBS

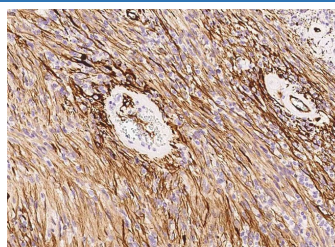
### Applications Recommended Dilution

<b>WB</b>	1:500-1:2000
<b>IHC-P</b>	1:200-1:2000
<b>FCM</b>	1:25-1:100
<b>IP</b>	1-5 µL/mg of lysate

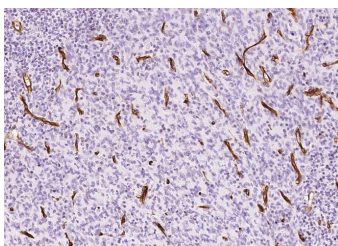
### Data



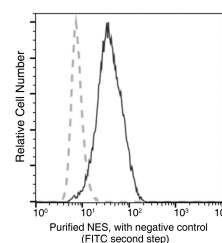
Immunohistochemistry of paraffin-embedded human brain using Nestin/NES Monoclonal Antibody at dilution of 1:1000.



Immunohistochemistry of paraffin-embedded human neurilemmoma using Nestin/NES Monoclonal Antibody at dilution of 1:1000.



Immunohistochemistry of paraffin-embedded human fasciculated sarcoma using Nestin/NES Monoclonal Antibody at dilution of 1:1000.



Flow cytometric analysis of Human NES expression on SHSY5Y cells. The cells were treated according to manufacturer's manual, stained with purified anti-Human NES, then a FITC-conjugated second step antibody. The fluorescence histograms were derived from gated events with the forward and side light-scatter characteristics of intact cells.

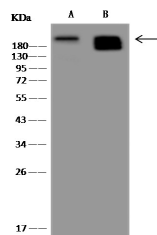
### For Research Use Only

Toll-free: 1-888-852-8623  
Web: [www.elabscience.com](http://www.elabscience.com)

Tel: 1-832-243-6086  
Email: [techsupport@elabscience.com](mailto:techsupport@elabscience.com)

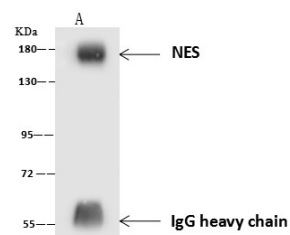
Fax: 1-832-243-6017

Rev. V1.0



Western Blot with NES Monoclonal Antibody at dilution of 1:500. Lane A: HeLa Whole Cell Lysate, Lane B: U251MG Whole Cell Lysate, Lysates/proteins at 30 µg per lane.

**Observed-MW:177 kDa**  
**Calculated-MW:177 kDa**



Immunoprecipitation analysis using 4 µL anti-NES Monoclonal Antibody and 60 µg of Immunomagnetic beads Protein A/G. Western blot was performed from the immunoprecipitate using NES Monoclonal Antibody at a dilution of 1:100. Lane A:0.5 mg U-251 MG Whole Cell Lysate

**Observed-MW:177 kDa**  
**Calculated-MW:177 kDa**

### Preparation & Storage

#### Storage

This antibody can be stored at 2°C-8°C for one month without detectable loss of activity. Antibody products are stable for twelve months from date of receipt when stored at -20°C to -80°C. Preservative-Free. Avoid repeated freeze-thaw cycles.

#### Shipping

Ice bag

### Background

This gene encodes a member of the intermediate filament protein family and is expressed primarily in nerve cells.