

## ICAM-1 Polyclonal Antibody

catalog number: E-AB-40590

**Note:** Centrifuge before opening to ensure complete recovery of vial contents.

### Description

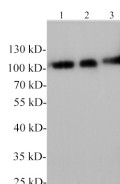
<b>Reactivity</b>	Rat
<b>Immunogen</b>	Recombinant Rat ICAM-1 protein expressed by E.coli.
<b>Host</b>	Rabbit
<b>Isotype</b>	IgG
<b>Purification</b>	Antigen Affinity Purification
<b>Conjugation</b>	Unconjugated
<b>Buffer</b>	PBS with 0.05% Proclin300, 1% protective protein and 50% glycerol, pH7.4

### Applications

### Recommended Dilution

<b>WB</b>	1:1000-2000
-----------	-------------

### Data



Western blotting with anti-ICAM-1 polyclonal antibody at dilution of 1:1000. Lane 1: Rat kidney lysate, Lane 2: Rat spleen lysate, lane 3: Rat liver lysate.

**Observed-MW:110 kDa**

**Calculated-MW:57 kDa**

### Preparation & Storage

<b>Storage</b>	Store at -20°C Valid for 12 months. Avoid freeze / thaw cycles.
<b>Shipping</b>	The product is shipped with ice pack, upon receipt, store it immediately at the temperature recommended.

### Background

ICAM proteins are ligands for the leukocyte adhesion protein LFA-1 (integrin alpha-L/beta-2). During leukocyte trans-endothelial migration, ICAM1 engagement promotes the assembly of endothelial apical cups through ARHGEF26/SGEF and RHOG activation.