

## Recombinant CD146/MCAM Monoclonal Antibody

catalog number: **AN300301P**

**Note:** *Centrifuge before opening to ensure complete recovery of vial contents.*

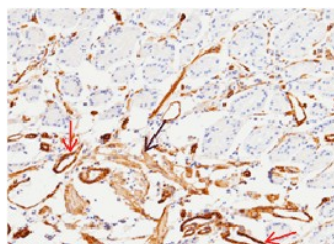
### Description

<b>Reactivity</b>	Human
<b>Immunogen</b>	Recombinant Human CD146 protein
<b>Host</b>	Rabbit
<b>Isotype</b>	IgG
<b>Clone</b>	5A10
<b>Purification</b>	Protein A
<b>Buffer</b>	0.2 µm filtered solution in PBS

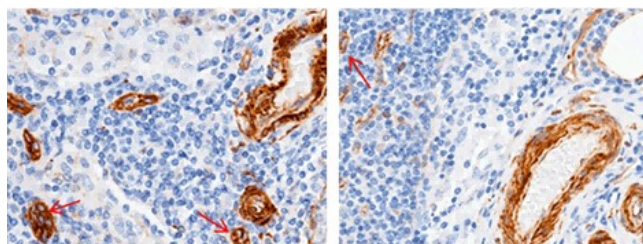
### Applications Recommended Dilution

<b>IHC-P</b>	1:100-1:500
<b>ICC/IF</b>	1:50-1:1000
<b>FCM</b>	1:25-1:100

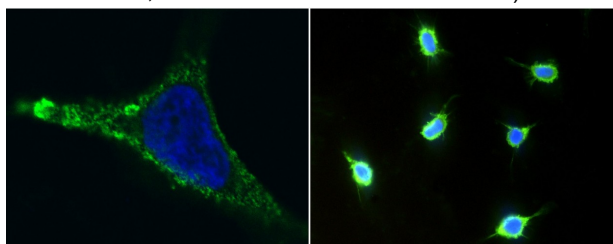
### Data



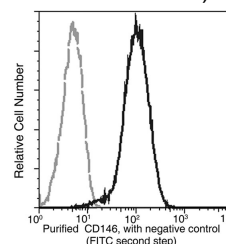
Immunohistochemistry of paraffin-embedded human stomach using CD146/MCAM Monoclonal Antibody at dilution of 1:200 (red arrow: membrane staining of endothelial cells, black arrow: smooth muscle cells).



Immunohistochemistry of paraffin-embedded human lymphonode using CD146/MCAM Monoclonal Antibody at dilution of 1:200 (red arrow: membrane staining of endothelial cells).



Immunofluorescence analysis of Human CD146 in HeLa cells. Cells were fixed with 4% PFA, blocked with 10% serum, and incubated with Rabbit anti-Human CD146 monoclonal antibody (1:100) at 4°C overnight. Then cells were stained with the Alexa Fluor® 488-conjugated (left panel, captured by laser confocal scanning microscope; right panel, captured by fluorescence microscope) Goat Anti-rabbit IgG secondary antibody (green) and counterstained with DAPI (blue). Positive staining was localized to plasma membrane.



Flow cytometric analysis of anti-CD146 on HeLa cells. HeLa cells were detached using 1X trypsin, washed, then stained with purified rabbit anti-CD146. Second step staining with goat anti-rabbit IgG FC polyclonal antibody.

### Preparation & Storage

#### For Research Use Only

Toll-free: 1-888-852-8623  
Web: [www.elabscience.com](http://www.elabscience.com)

Tel: 1-832-243-6086  
Email: [techsupport@elabscience.com](mailto:techsupport@elabscience.com)

Fax: 1-832-243-6017

Rev. V1.0

**Storage**

This antibody can be stored at 2°C-8°C for one month without detectable loss of activity. Antibody products are stable for twelve months from date of receipt when stored at -20°C to -80°C. Preservative-Free. Avoid repeated freeze-thaw cycles.

**Shipping**

Ice bag

**Background**

Plays a role in cell adhesion, and in cohesion of the endothelial monolayer at intercellular junctions in vascular tissue. Its expression may allow melanoma cells to interact with cellular elements of the vascular system, thereby enhancing hematogeneous tumor spread. Could be an adhesion molecule active in neural crest cells during embryonic development. Acts as surface receptor that triggers tyrosine phosphorylation of FYN and PTK2/FAK1, and a transient increase in the intracellular calcium concentration.

**For Research Use Only**