

CD20 Polyclonal Antibody

catalog number: D-AB-10179L

Note: Centrifuge before opening to ensure complete recovery of vial contents.

Description

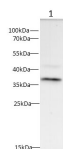
Reactivity	Mouse;Rat
Immunogen	Recombinant Mouse CD20 protein expressed by E.coli
Host	Rabbit
Isotype	IgG
Purification	Antigen Affinity Purification
Conjugation	Unconjugated
buffer	PBS with 0.05% proclin 300, 1% protective protein and 50% glycerol,pH7.4

Applications

Recommended Dilution

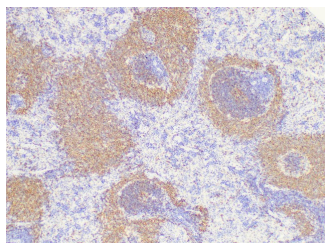
WB	1:500-1:1000
-----------	--------------

Data

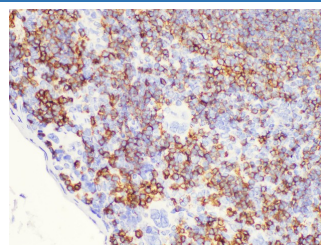


Western blot with CD20 Polyclonal antibody at dilution of 1:500.lane 1:Rat spleen

Observed-MV:37 kDa
Calculated-MV:32 kDa



Immunohistochemistry of paraffin-embedded Rat spleen using CD20 Polyclonal Antibody at dilution of 1:100



Immunohistochemistry of paraffin-embedded Mouse spleen using CD20 Polyclonal Antibody at dilution of 1:100

Preparation & Storage

Storage	Store at -20°C Valid for 12 months. Avoid freeze / thaw cycles.
Shipping	The product is shipped with ice pack,upon receipt,store it immediately at the temperature recommended.

Background

CD20 is a 33-37 kDa transmembrane phosphoprotein. CD20 is a B-lymphocyte surface molecule that is widely expressed during B-cell ontogeny, from early pre-B-cell developmental stages until final differentiation into plasma cells. CD20 functions as calcium-permeable cation channel. It is involved in the regulation of B-cell activation and proliferation. CD20 serves as a useful target for antibody-mediated therapeutic depletion of B-cells.

For Research Use Only