

HSPA1A Polyclonal Antibody

Catalog Number: E-AB-70102

Note: Centrifuge before opening to ensure complete recovery of vial contents.

Description

Reactivity	Human, Mouse, Rat
Immunogen	Recombinant protein corresponding to Mouse HSP70
Host	Rabbit
Isotype	IgG
Purification	Affinity purification
Conjugation	Unconjugated
Formulation	PBS with 0.02% sodium azide, 1% protective protein and 50% glycerol, pH7.4

Applications Recommended Dilution

WB	1:500-1:2000
IHC	1:300-1:800

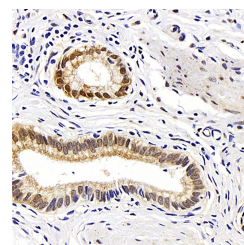
Data



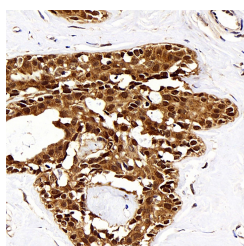
www.elabscience.com

Western Blot analysis of various samples using HSPA1A Polyclonal Antibody at dilution of 1:500.

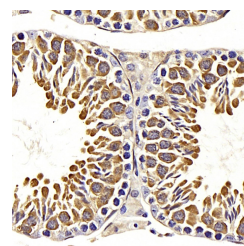
Observed Mw:70kDa
Calculated Mw:70kDa



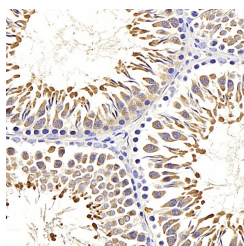
Immunohistochemistry analysis of paraffin-embedded human gallbladder using HSPA1A Polyclonal Antibody at dilution of 1:500.



Immunohistochemistry analysis of paraffin-embedded human breast cancer using HSPA1A Polyclonal Antibody at dilution of 1:500.



Immunohistochemistry analysis of paraffin-embedded mouse testis using HSPA1A Polyclonal Antibody at dilution of 1:500.



Immunohistochemistry analysis of paraffin-

For Research Use Only

A Reliable Research Partner in Life Science and Medicine

Toll-free: 1-888-852-8623

Web: www.elabscience.com

Tel: 1-832-243-6086

Email: techsupport@elabscience.com

Fax: 1-832-243-6017

HSPA1A Polyclonal Antibody

Catalog Number: E-AB-70102



embedded rat testis using HSPA1A Polyclonal
Antibody at dilution of 1:500.

Preparation & Storage

Storage Store at -20°C. Avoid freeze / thaw cycles.

Background

This intronless gene encodes a 70kDa heat shock protein which is a member of the heat shock protein 70 family. In conjunction with other heat shock proteins, this protein stabilizes existing proteins against aggregation and mediates the folding of newly translated proteins in the cytosol and in organelles. It is also involved in the ubiquitin-proteasome pathway through interaction with the AU-rich element RNA-binding protein 1. The gene is located in the major histocompatibility complex class III region, in a cluster with two closely related genes which encode similar proteins.

For Research Use Only

A Reliable Research Partner in Life Science and Medicine

Toll-free: 1-888-852-8623

Web: www.elabscience.com

Tel: 1-832-243-6086

Email: techsupport@elabscience.com

Fax: 1-832-243-6017