

## Recombinant Phospho-Cyclin D1 (Thr286) Monoclonal Antibody

catalog number: **AN301503L**

**Note:** Centrifuge before opening to ensure complete recovery of vial contents.

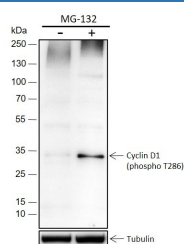
### Description

<b>Reactivity</b>	Human;Rat;Mouse
<b>Immunogen</b>	Recombinant human Phospho-Cyclin D1 (Thr286) fragment
<b>Host</b>	Rabbit
<b>Isotype</b>	IgG, $\kappa$
<b>Clone</b>	A202
<b>Purification</b>	Protein A purified
<b>Buffer</b>	PBS, 50% glycerol, 0.05% Proclin 300, 0.05% protein protectant.

### Applications Recommended Dilution

<b>WB</b>	1:500-1:2000
<b>IHC</b>	1:50-1:100
<b>FCM</b>	1:50

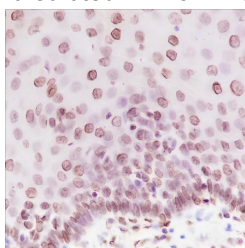
### Data



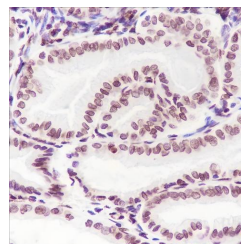
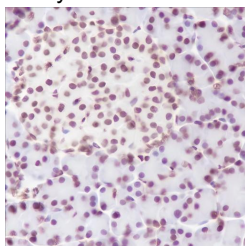
Western Blot with Phospho-Cyclin D1 (Thr286) Monoclonal Antibody at dilution of 1:2000. (-): HT-1080, (+): HT-1080 + MG-132(10  $\mu$ m, 4hr)

**Observed-MW:34 kDa**

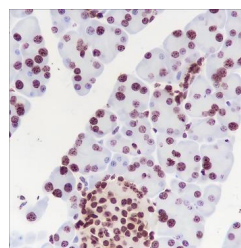
**Calculated-MW:34 kDa**



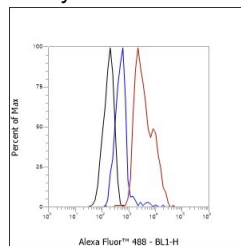
Immunohistochemistry of paraffin-embedded Human esophagus using Phospho-Cyclin D1 (Thr286) Monoclonal Antibody at dilution of 1:100.



Immunohistochemistry of paraffin-embedded Human endometrial cancer using Phospho-Cyclin D1 (Thr286) Monoclonal Antibody at dilution of 1:100.



Immunohistochemistry of paraffin-embedded Mouse pancreas using Phospho-Cyclin D1 (Thr286) Monoclonal Antibody at dilution of 1:100.



### For Research Use Only

Toll-free: 1-888-852-8623  
Web: [www.elabscience.com](http://www.elabscience.com)

Tel: 1-832-243-6086  
Email: [techsupport@elabscience.com](mailto:techsupport@elabscience.com)

Fax: 1-832-243-6017

Rev. V1.0

Immunohistochemistry of paraffin-embedded Rat pancreas using Phospho-Cyclin D1 (Thr286) Monoclonal Antibody at dilution of 1:100.

Flow cytometric analysis of human Phospho-Cyclin D1 (Thr286) expression on MCF-7 cells. Cells were stained with purified anti-Human Phospho-Cyclin D1 (Thr286), then a Alexa Fluor 488-conjugated second step antibody. The histogram were derived from events with the forward and side light-scatter characteristics of intact cells.

## Preparation & Storage

<b>Storage</b>	Store at -20°C Valid for 12 months. Avoid freeze / thaw cycles.
<b>Shipping</b>	Ice bag

## Background

Regulatory component of the cyclin D1-CDK4 (DC) complex that phosphorylates and inhibits members of the retinoblastoma (RB) protein family including RB1 and regulates the cell-cycle during G1/S transition. Cyclin D-CDK4 complexes are major integrators of various mitogenic and antimitogenic signals. Also substrate for SMAD3, phosphorylating SMAD3 in a cell-cycle-dependent manner and repressing its transcriptional activity. Component of the ternary complex, cyclin D1/CDK4/CDKN1B, required for nuclear translocation and activity of the cyclin D-CDK4 complex. Exhibits transcriptional corepressor activity with INSM1 on the NEUROD1 and INS promoters in a cell cycle-independent manner.

## For Research Use Only