

Recombinant Human SIRP α /CD172a protein (His Tag)

Catalog Number: PDEH101043



Note: Centrifuge before opening to ensure complete recovery of vial contents.

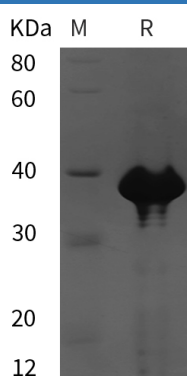
Description

Species	Human
Source	E.coli-derived Human SIRPA protein Glu31-Ser350, with an N-terminal His & C-terminal His
Mol_Mass	35.1 kDa
Accession	P78324-2
Bio-activity	Not validated for activity

Properties

Purity	> 95% as determined by reducing SDS-PAGE.
Endotoxin	< 10 EU/mg of the protein as determined by the LAL method
Storage	Generally, lyophilized proteins are stable for up to 12 months when stored at -20 to -80 °C. Reconstituted protein solution can be stored at 4-8°C for 2-7 days. Aliquots of reconstituted samples are stable at < -20°C for 3 months.
Shipping	This product is provided as lyophilized powder which is shipped with ice packs.
Formulation	Lyophilized from a 0.2 μ m filtered solution in PBS with 5% Trehalose and 5% Mannitol.
Reconstitution	It is recommended that sterile water be added to the vial to prepare a stock solution of 0.5 mg/mL. Concentration is measured by UV-Vis.

Data



> 95 % as determined by reducing SDS-PAGE.

Background

Signal Regulatory Protein α (SIRP α) is a monomeric approximately 90 kD type I transmembrane glycoprotein. The 504 amino acid human SIRP α contains two Ig-like C1-type domains and one Ig-like V-type domain. SIRP α can express in various tissues, mainly on brain and myeloid cells, including macrophages, neutrophils, dendritic and Langerhans cells. It also can detect in neurons, smooth muscle and endothelial cells. SIRPA is an immunoglobulin-like cell surface receptor for CD47. SIRP α acts as docking protein and induces translocation of PTPN6, PTPN11 and other binding partners from the cytosol to the plasma membrane. SIRP α shows adhesion of cerebellar neurons, neurite outgrowth and glial cell attachment. SIRP α engagement generally produces a negative regulatory signal, it may mediate negative regulation of phagocytosis, mast cell activation and dendritic cell activation

For Research Use Only

A Reliable Research Partner in Life Science and Medicine
Tel:400-999-2100

Email:techsupport@elabscience.cn

Web:www.elabscience.cn

Rev. V1.3