

Recombinant CUL4A/B Monoclonal Antibody

catalog number: **AN301180L**

Note: Centrifuge before opening to ensure complete recovery of vial contents.

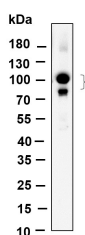
Description

Reactivity	Human;Mouse;Rat
Immunogen	Recombinant Human CUL4A/B protein
Host	Rabbit
Isotype	IgG, κ
Clone	9D6
Purification	Protein A
Buffer	PBS, 50% glycerol, 0.05% Proclin 300, 0.05% protein protectant.

Applications Recommended Dilution

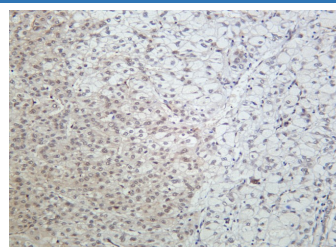
IHC	1:200-1:1000
WB	1:2000-1:10000

Data



Western Blot with Recombinant CUL4A/B Monoclonal Antibody at dilution of 1:1000 dilution. Lane A: HeLa lysate.

Observed-MW:88 kDa,104 kDa
Calculated-MW:88104 kDa



Immunohistochemistry of paraffin-embedded human hepatocellular carcinoma using Recombinant CUL4A/B Monoclonal Antibody at dilution of 1:200.

Preparation & Storage

Storage	Store at -20°C Valid for 12 months. Avoid freeze / thaw cycles.
Shipping	Ice bag

Background

CUL4A is the ubiquitin ligase component of a multimeric complex involved in the degradation of DNA damage-response proteins (Liu et al., 2009 [PubMed 19481525]).[supplied by OMIM, Oct 2009].CUL4B is a member of the cullin family. The encoded protein forms a complex that functions as an E3 ubiquitin ligase and catalyzes the polyubiquitination of specific protein substrates in the cell. The protein interacts with a ring finger protein, and is required for the proteolysis of several regulators of DNA replication including chromatin licensing and DNA replication factor 1 and cyclin E. Multiple transcript variants encoding different isoforms have been found for this gene.

For Research Use Only

Toll-free: 1-888-852-8623
Web: www.elabscience.com

Tel: 1-832-243-6086
Email: techsupport@elabscience.com

Fax: 1-832-243-6017

Rev. V1.0